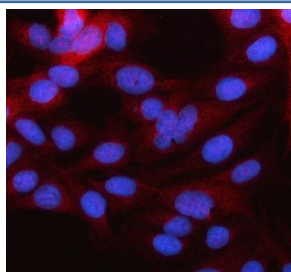


MARCH2 Antibody / MARCHF2 / Membrane-associated RING finger protein 2 (RQ8435)

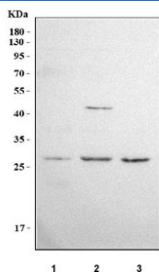
Catalog No.	Formulation	Size
RQ8435	0.5mg/ml if reconstituted with 0.2ml sterile DI water	100 ug

[Bulk quote request](#)

Availability	1-3 business days
Species Reactivity	Human
Format	Antigen affinity purified
Host	Rabbit
Clonality	Polyclonal (rabbit origin)
Isotype	Rabbit IgG
Purity	Antigen affinity purified
Buffer	Lyophilized from 1X PBS with 2% Trehalose
UniProt	Q9P0N8
Applications	Western Blot : 0.5-1ug/ml Immunofluorescence : 5ug/ml ELISA : 0.1-0.5ug/ml
Limitations	This MARCH2 antibody is available for research use only.



Immunofluorescent staining of FFPE human HeLa cells with MARCH2 antibody (red) and DAPI nuclear stain (blue). HIER: steam section in pH6 citrate buffer for 20 min.



Western blot testing of human 1) HEL, 2) PC-3 and 3) 293T cell lysate with MARCH2 antibody. Predicted molecular weight ~27 kDa.

Description

MARCH2 is an E3 ubiquitin-protein ligase that may mediate ubiquitination of TFRC and CD86, and promote their subsequent endocytosis and sorting to lysosomes via multivesicular bodies. E3 ubiquitin ligases accept ubiquitin from an E2 ubiquitin-conjugating enzyme in the form of a thioester and then directly transfer the ubiquitin to targeted substrates. MARCH2 may be involved in endosomal trafficking through interaction with STX6.

Application Notes

Optimal dilution of the MARCH2 antibody should be determined by the researcher.

Immunogen

An E.coli-derived human recombinant protein (M1-V246) was used as the immunogen for the MARCH2 antibody.

Storage

After reconstitution, the MARCH2 antibody can be stored for up to one month at 4oC. For long-term, aliquot and store at -20oC. Avoid repeated freezing and thawing.