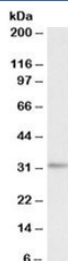


MAPRE3 Antibody (R35906)

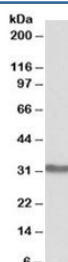
Catalog No.	Formulation	Size
R35906-100UG	0.5 mg/ml in 1X TBS, pH7.3, with 0.5% BSA (US sourced) and 0.02% sodium azide	100 ug

[Bulk quote request](#)

Availability	1-3 business days
Species Reactivity	Human, Mouse
Predicted Reactivity	Cow, Dog
Format	Antigen affinity purified
Host	Goat
Clonality	Polyclonal (goat origin)
Isotype	Goat Ig
Purity	Antigen affinity
Gene ID	22924
Applications	Western Blot : 0.1-1.0 ug/ml ELISA (peptide) LOD : 1:64000
Limitations	This MAPRE3 antibody is available for research use only.



Western blot testing of human brain amygdala lysate with MAPRE3 antibody at 0.1ug/ml. Predicted molecular weight: ~32kDa.



Western blot testing of mouse brain lysate with MAPRE3 antibody at 0.3ug/ml. Predicted molecular weight: ~32kDa.

Description

Additional name(s) for this target protein: Microtubule-associated protein, RP/EB family, member 3

Application Notes

Optimal dilution of the MAPRE3 antibody should be determined by the researcher.

Immunogen

Amino acids SGRLSNVAPPCILR were used as the immunogen for this MAPRE3 antibody.

Storage

Aliquot and store the MAPRE3 antibody at -20oC.