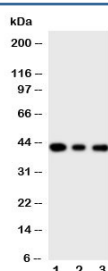


MAPK13 Antibody (R31045)

Catalog No.	Formulation	Size
R31045	0.5mg/ml if reconstituted with 0.2ml sterile DI water	100 ug

Bulk quote request

Availability	1-3 business days
Species Reactivity	Human, Mouse, Rat
Format	Antigen affinity purified
Clonality	Polyclonal (rabbit origin)
Isotype	Rabbit IgG
Purity	Antigen affinity
Buffer	Lyophilized from 1X PBS with 2.5% BSA and 0.025% sodium azide/thimerosal
UniProt	O15264
Applications	Western Blot : 0.5-1ug/ml
Limitations	This MAPK13 antibody is available for research use only.



Western blot testing of MAPK13 antibody and Lane 1: PANC; 2: COLO320; 3: Jurkat cell lysate. Expected/observed size ~42KD

Description

Mitogen-Activated Protein Kinase 13, also called p38-delta or Stress-Activated Protein Kinase 4 (SAPK4), is an enzyme that in humans is encoded by the MAPK13 gene. The protein encoded by this gene is a member of the MAP kinase family. MAP kinases act as an integration point for multiple biochemical signals, and are involved in a wide variety of cellular processes such as proliferation, differentiation, transcription regulation and development. This kinase is closely related to p38 MAP kinase, both of which can be activated by proinflammatory cytokines and cellular stress. MAP kinase kinases 3, and 6 can phosphorylate and activate this kinase. Transcription factor ATF2, and microtubule dynamics regulator stathmin have been shown to be the substrates of this kinase.

Application Notes

The stated application concentrations are suggested starting amounts. Titration of the MAPK13 antibody may be required due to differences in protocols and secondary/substrate sensitivity.

Immunogen

An amino acid sequence from the C-terminus of human SAPK4/MAPK13(YKEIVNFSPIARKDSRRR) was used as the immunogen for this MAPK13 antibody.

Storage

After reconstitution, the MAPK13 antibody can be stored for up to one month at 4oC. For long-term, aliquot and store at -20oC. Avoid repeated freezing and thawing.