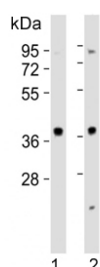


## MAPK12 Antibody / p38 gamma (F54912)

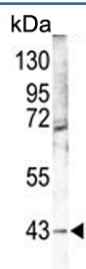
Catalog No.	Formulation	Size
F54912-0.4ML	In 1X PBS, pH 7.4, with 0.09% sodium azide	0.4 ml
F54912-0.08ML	In 1X PBS, pH 7.4, with 0.09% sodium azide	0.08 ml

[Bulk quote request](#)

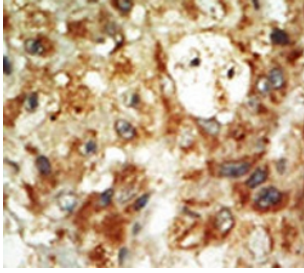
<b>Availability</b>	1-3 business days
<b>Species Reactivity</b>	Human, Mouse
<b>Format</b>	Purified
<b>Host</b>	Rabbit
<b>Clonality</b>	Polyclonal (rabbit origin)
<b>Isotype</b>	Rabbit Ig
<b>Purity</b>	Purified
<b>UniProt</b>	P53778
<b>Localization</b>	Cytoplasmic, nuclear
<b>Applications</b>	Western Blot : 1:500-1:1000 Immunohistochemistry (FFPE) : 1:50-1:100
<b>Limitations</b>	This MAPK12 antibody is available for research use only.



Western blot testing of human 1) HeLa and 2) Jurkat cell lysate with MAPK12 antibody. Expected molecular weight: 38-42 kDa.



Western blot testing of mouse lung tissue lysate with MAPK12 antibody. Expected molecular weight: 38-42 kDa.



IHC testing of FFPE human cancer tissue with MAPK12 antibody. HIER: steam section in pH6 citrate buffer for 20 min and allow to cool prior to staining.

## Description

Activation of members of the mitogen-activated protein kinase family is a major mechanism for transduction of extracellular signals. Stress-activated protein kinases are one subclass of MAP kinases. MAPK12 functions as a signal transducer during differentiation of myoblasts to myotubes.

## Application Notes

The stated application concentrations are suggested starting points. Titration of the MAPK12 antibody may be required due to differences in protocols and secondary/substrate sensitivity.

## Immunogen

A portion of amino acids 339-367 from the human protein was used as the immunogen for the MAPK12 antibody.

## Storage

Aliquot the MAPK12 antibody and store frozen at -20°C or colder. Avoid repeated freeze-thaw cycles.