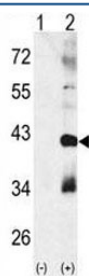


MAPK11 Antibody (F40153)

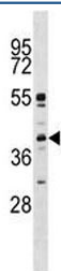
Catalog No.	Formulation	Size
F40153-0.4ML	In 1X PBS, pH 7.4, with 0.09% sodium azide	0.4 ml
F40153-0.08ML	In 1X PBS, pH 7.4, with 0.09% sodium azide	0.08 ml

[Bulk quote request](#)

Availability	1-3 business days
Species Reactivity	Human, Mouse
Format	Antigen affinity purified
Host	Rabbit
Clonality	Polyclonal (rabbit origin)
Isotype	Rabbit Ig
Purity	Antigen affinity
UniProt	Q15759
Applications	Western Blot : 1:1000
Limitations	This MAPK11 antibody is available for research use only.



Western blot analysis of MAPK11 antibody and 293 cell lysate (2 ug/lane) either nontransfected (Lane 1) or transiently transfected with the MAPK11 gene (2).



MAPK11 antibody western blot analysis in K562 lysate

Description

P38 beta is a member of the MAP kinase subfamily of Ser/Thr protein kinases. MAP kinases act as an integration point for multiple biochemical signals, and are involved in a wide variety of cellular processes such as proliferation, differentiation, transcription regulation and development. This kinase is closely related to p38 MAP kinase, both of which can be activated by changes in osmolarity of the extracellular environment, proinflammatory cytokines and cellular stress. This protein preferentially phosphorylates transcription factor ATF2. It is activated by phosphorylation on threonine and tyrosine by MKK6, and inhibited by pyridinyl-imidazole related compounds. Highest levels of expression are found in the brain and heart, with additional expression in the placenta, lung, liver, skeletal muscle, kidney and pancreas.

Application Notes

Titration of the MAPK11 antibody may be required due to differences in protocols and secondary/substrate sensitivity.

Immunogen

A portion of amino acids 133-161 from the human protein was used as the immunogen for this MAPK11 antibody.

Storage

Aliquot the MAPK11 antibody and store frozen at -20oC or colder. Avoid repeated freeze-thaw cycles.