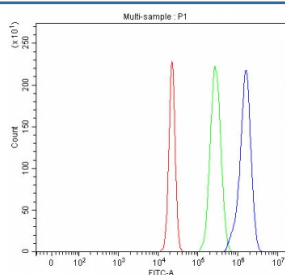


MAP4K5 Antibody / MEKKK5 (RQ8639)

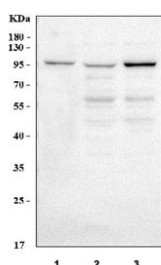
Catalog No.	Formulation	Size
RQ8639	0.5mg/ml if reconstituted with 0.2ml sterile DI water	100 ug

Bulk quote request

Availability	1-3 days
Species Reactivity	Human
Format	Antigen affinity purified
Host	Rabbit
Clonality	Polyclonal (rabbit origin)
Isotype	Rabbit IgG
Purity	Antigen affinity purified
Buffer	Lyophilized from 1X PBS with 2% Trehalose
UniProt	Q9Y4K4
Applications	Western Blot : 0.5-1ug/ml Flow Cytometry : 1-3ug/million cells ELISA : 0.1-0.5ug/ml
Limitations	This MAP4K5 antibody is available for research use only.



Flow cytometry testing of fixed and permeabilized human HepG2 cells with MAP4K5 antibody at 1ug/million cells (blocked with goat sera); Red=cells alone, Green=isotype control, Blue= MAP4K5 antibody.



Western blot testing of human 1) Jurkat, 2) HeLa, and 3) 293T cell lysate with MAP4K5 antibody. Predicted molecular weight ~95 kDa.

Description

Mitogen-activated protein kinase kinase kinase 5 is an enzyme that in humans is encoded by the MAP4K5 gene. This gene encodes a member of the serine/threonine protein kinase family, that is highly similar to yeast SPS1/STE20 kinase. Yeast SPS1/STE20 functions near the beginning of the MAP kinase signal cascades that is essential for yeast pheromone response. This kinase was shown to activate Jun kinase in mammalian cells, which suggested a role in stress response. Two alternatively spliced transcript variants encoding the same protein have been described for this gene.

Application Notes

Optimal dilution of the MAP4K5 antibody should be determined by the researcher.

Immunogen

An E.coli-derived human recombinant protein (amino acids M1-Q733) was used as the immunogen for the MAP4K5 antibody.

Storage

After reconstitution, the MAP4K5 antibody can be stored for up to one month at 4°C. For long-term, aliquot and store at -20°C. Avoid repeated freezing and thawing.