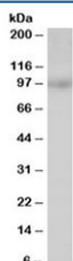


MAP4K1 Antibody (R33675)

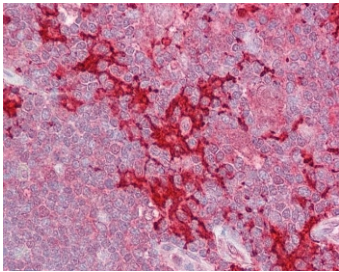
Catalog No.	Formulation	Size
R33675-100UG	0.5 mg/ml in 1X TBS, pH7.3, with 0.5% BSA (US sourced) and 0.02% sodium azide	100 ug

[Bulk quote request](#)

Availability	1-3 business days
Species Reactivity	Human
Predicted Reactivity	Cow, Dog, Mouse, Pig, Rat
Format	Antigen affinity purified
Host	Goat
Clonality	Polyclonal (goat origin)
Isotype	Goat Ig
Purity	Antigen affinity
Gene ID	11184
Applications	Western Blot : 0.5-2ug/ml IHC (FFPE) : 2.5uug/ml ELISA (peptide) LOD : 1:32000
Limitations	This MAP4K1 antibody is available for research use only.



Western blot testing of Jurkat lysate with MAP4K1 antibody at 0.5ug/ml. Predicted molecular weight: ~96 kDa.



IHC testing of FFPE human thymus tissue with MAP4K1 antibody at 2.5ug/ml. Required HIER: steamed antigen retrieval with pH6 citrate buffer; AP-staining.

Description

Additional name(s) for this target protein: Mitogen-activated protein kinase kinase kinase kinase 1

Application Notes

Optimal dilution of the MAP4K1 antibody should be determined by the researcher.

1. This MAP4K1 antibody is specific to isoforms 1 and 2.

Immunogen

Amino acids DVVDPDIFNRDPR were used as the immunogen for this MAP4K1 antibody.

Storage

Aliquot and store the MAP4K1 antibody at -20oC.