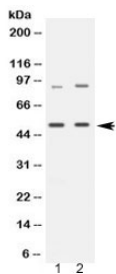


MAP3K8 Antibody (R32444)

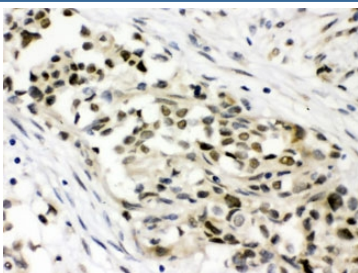
Catalog No.	Formulation	Size
R32444	0.5mg/ml if reconstituted with 0.2ml sterile DI water	100 ug

[Bulk quote request](#)

Availability	1-3 business days
Species Reactivity	Human, Rat
Format	Antigen affinity purified
Clonality	Polyclonal (rabbit origin)
Isotype	Rabbit IgG
Purity	Antigen affinity
Buffer	Lyophilized from 1X PBS with 2.5% BSA and 0.025% sodium azide
UniProt	P41279
Localization	Cytoplasmic, membranous
Applications	Western Blot : 0.5-1ug/ml IHC (FFPE) : 1-2ug/ml
Limitations	This MAP3K8 antibody is available for research use only.



Western blot testing of 1) rat brain and 2) human HeLa lysate with MAP3K8 antibody at 0.5ug/ml. Expected molecular weight: ~58/52 kDa (isoforms 1/2), observed here at ~52 kDa.



IHC testing of FFPE human breast cancer tissue with MAP3K8 antibody at 1ug/ml. HIER: steam in pH6 citrate buffer and allow to cool prior to staining.

Description

Mitogen-activated protein kinase kinase kinase 8 is an enzyme that in humans is encoded by the MAP3K8 gene. This gene is an oncogene that encodes a member of the serine/threonine protein kinase family. The encoded protein localizes to the cytoplasm and can activate both the MAP kinase and JNK kinase pathways. This protein was shown to activate I κ B kinases, and thus induce the nuclear production of NF- κ B. Additionally, this protein was found to promote the production of TNF- α and IL-2 during T lymphocyte activation. This gene may also utilize a downstream in-frame translation start codon, and thus produce an isoform containing a shorter N-terminus. The shorter isoform has been shown to display weaker transforming activity. Alternate splicing results in multiple transcript variants that encode the same protein.

Application Notes

Optimal dilution of the MAP3K8 antibody should be determined by the researcher.

Immunogen

Amino acids D9-L193 were used as the immunogen for the MAP3K8 antibody.

Storage

Prior to reconstitution, store at 4oC. After reconstitution, the MAP3K8 antibody can be stored for up to one month at 4oC. For long-term, aliquot and store at -20oC. Avoid repeated freezing and thawing.