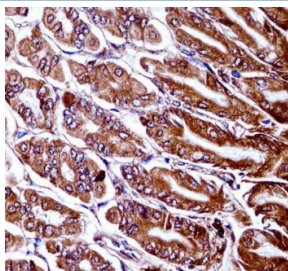


Map3k7 Antibody / Tak1 (F54678)

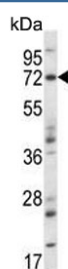
Catalog No.	Formulation	Size
F54678-0.4ML	In 1X PBS, pH 7.4, with 0.09% sodium azide	0.4 ml
F54678-0.08ML	In 1X PBS, pH 7.4, with 0.09% sodium azide	0.08 ml

Bulk quote request

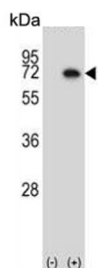
Availability	1-3 business days
Species Reactivity	Mouse
Format	Purified
Clonality	Polyclonal (rabbit origin)
Isotype	Rabbit Ig
Purity	Antigen affinity purified
UniProt	Q62073
Localization	Cytoplasmic, plasma membrane
Applications	Immunohistochemistry (FFPE) : 1:25 Western Blot : 1:500-1:2000
Limitations	This Map3k7 antibody is available for research use only.



IHC testing of FFPE mouse stomach tissue with Map3k7 antibody. HIER: steam section in pH6 citrate buffer for 20 min and allow to cool prior to staining.



Western blot testing of mouse heart tissue lysate with Map3k7 antibody. Predicted molecular weight: 64-69 kDa, routinely observed at 78-82 kDa.



Western blot testing of 1) non-transfected and 2) transfected 293 cell lysate with Map3k7 antibody. Predicted molecular weight: 64-69 kDa, routinely observed at 78-82 kDa.

Description

Component of a protein kinase signal transduction cascade. Mediator of TRAF6 and TGF-beta signal transduction. Activates IKBKB and MAPK8 in response to TRAF6 signaling. Stimulates NF-kappa-B activation and the p38 MAPK pathway. In osmotic stress signaling, plays a major role in the activation of MAPK8/JNK, but not that of NF-kappa-B.

Application Notes

The stated application concentrations are suggested starting points. Titration of the Map3k7 antibody may be required due to differences in protocols and secondary/substrate sensitivity.

Immunogen

A portion of amino acids 131-160 from the mouse protein was used as the immunogen for the Map3k7 antibody.

Storage

Aliquot the Map3k7 antibody and store frozen at -20oC or colder. Avoid repeated freeze-thaw cycles.