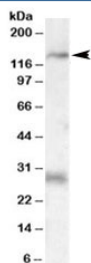


MAP3K6 Antibody (R35532)

Catalog No.	Formulation	Size
R35532-100UG	0.5 mg/ml in 1X TBS, pH7.3, with 0.5% BSA (US sourced) and 0.02% sodium azide	100 ug

[Bulk quote request](#)

Availability	1-3 business days
Species Reactivity	Human, Mouse, Rat
Predicted Reactivity	Cow, Dog
Format	Antigen affinity purified
Host	Goat
Clonality	Polyclonal (goat origin)
Isotype	Goat Ig
Purity	Antigen affinity
Gene ID	9064
Applications	Western Blot : 0.3-1ug/ml ELISA (peptide) LOD : 1:8000
Limitations	This MAP3K6 antibody is available for research use only.



Western blot testing of rat heart lysate with MAP3K6 antibody at 0.3ug/ml. The expected ~140kDa band and the additional ~28kDa band are both blocked by the immunizing peptide.

Description

Additional name(s) for this target protein: Mitogen-activated protein kinase kinase kinase 6

Application Notes

Optimal dilution of the MAP3K6 antibody should be determined by the researcher.

Immunogen

Amino acids RAILAQRAGSTP were used as the immunogen for this MAP3K6 antibody.

Storage

Aliquot and store the MAP3K6 antibody at -20oC.