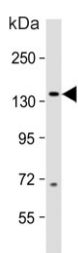


MAP3K15 Antibody (F54647)

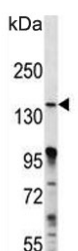
Catalog No.	Formulation	Size
F54647-0.4ML	In 1X PBS, pH 7.4, with 0.09% sodium azide	0.4 ml
F54647-0.08ML	In 1X PBS, pH 7.4, with 0.09% sodium azide	0.08 ml

[Bulk quote request](#)

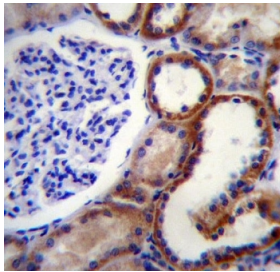
Availability	1-3 business days
Species Reactivity	Human, Mouse
Format	Purified
Clonality	Polyclonal (rabbit origin)
Isotype	Rabbit Ig
Purity	Antigen affinity purified
UniProt	Q6ZN16
Applications	Flow Cytometry : 1:25 (1x10 ⁶ cells) Immunohistochemistry (FFPE) : 1:25 Western Blot : 1:500-1:2000
Limitations	This MAP3K15 antibody is available for research use only.



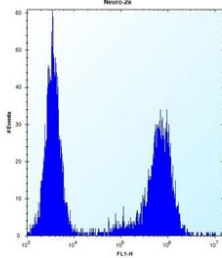
Western blot testing of human fetal brain lysate with MAP3K15 antibody. Predicted molecular weight ~147 kDa.



Western blot testing of mouse Neuro-2a cell lysate with MAP3K15 antibody. Predicted molecular weight ~147 kDa.



IHC testing of FFPE human kidney tissue with MAP3K15 antibody. HIER: steam section in pH6 citrate buffer for 20 min and allow to cool prior to staining.



Flow cytometry testing of mouse Neuro-2a cells with MAP3K15 antibody; Blue=isotype control, Green= MAP3K15 antibody.

Description

The protein encoded by this gene is a member of the mitogen-activated protein kinase (MAPK) family. These family members function in a protein kinase signal transduction cascade, where an activated MAPK kinase kinase (MAP3K) phosphorylates and activates a specific MAPK kinase (MAP2K), which then activates a specific MAPK. This MAP3K protein plays an essential role in apoptotic cell death triggered by cellular stresses. [provided by RefSeq].

Application Notes

The stated application concentrations are suggested starting points. Titration of the MAP3K15 antibody may be required due to differences in protocols and secondary/substrate sensitivity.

Immunogen

A portion of amino acids 315-342 from the human protein was used as the immunogen for the MAP3K15 antibody.

Storage

Aliquot the MAP3K15 antibody and store frozen at -20oC or colder. Avoid repeated freeze-thaw cycles.