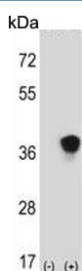


MAP2K3 Antibody / MEK3 / MKK3 (F54691)

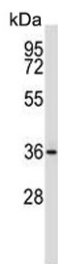
| Catalog No. | Formulation | Size |
|---------------|--|---------|
| F54691-0.4ML | In 1X PBS, pH 7.4, with 0.09% sodium azide | 0.4 ml |
| F54691-0.08ML | In 1X PBS, pH 7.4, with 0.09% sodium azide | 0.08 ml |

[Bulk quote request](#)

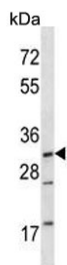
| | |
|---------------------------|--|
| Availability | 1-3 business days |
| Species Reactivity | Human, Mouse |
| Format | Purified |
| Clonality | Polyclonal (rabbit origin) |
| Isotype | Rabbit Ig |
| Purity | Antigen affinity purified |
| UniProt | O09110 |
| Applications | Western Blot : 1:500-1:2000 |
| Limitations | This MAP2K3 antibody is available for research use only. |



Western blot testing of 1) non-transfected and 2) transfected 293 cell lysate with MAP2K3 antibody.



Western blot testing of human MCF7 cell lysate with MAP2K3 antibody. Expected molecular weight: 36-39 kDa (two isoforms).



Western blot testing of mouse NIH 3T3 cell lysate with MAP2K3 antibody. Expected molecular weight: 36-39 kDa (two isoforms).

Description

Dual specificity kinase. Is activated by cytokines and environmental stress in vivo. Catalyzes the concomitant phosphorylation of a threonine and a tyrosine residue in the MAP kinase p38 (By similarity).

Application Notes

The stated application concentrations are suggested starting points. Titration of the MAP2K3 antibody may be required due to differences in protocols and secondary/substrate sensitivity.

Immunogen

A portion of amino acids 132-160 from the mouse protein was used as the immunogen for the MAP2K3 antibody.

Storage

Aliquot the MAP2K3 antibody and store frozen at -20°C or colder. Avoid repeated freeze-thaw cycles.