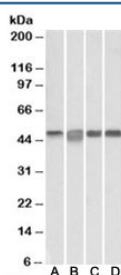


## MAP2K2 Antibody (R33535)

Catalog No.	Formulation	Size
R33535-100UG	0.5 mg/ml in 1X TBS, pH7.3, with 0.5% BSA (US sourced) and 0.02% sodium azide	100 ug

[Bulk quote request](#)

Availability	1-3 business days
Species Reactivity	Human
Format	Antigen affinity purified
Host	Goat
Clonality	Polyclonal (goat origin)
Isotype	Goat Ig
Purity	Antigen affinity
Gene ID	5605
Applications	Western Blot : 0.1-0.3ug/ml ELISA (peptide) LOD : 1:128000
Limitations	This MAP2K2 antibody is available for research use only.



Western blot testing of Daudi [A], Jurkat [B], K562 [C] and MOLT4 [D] lysates with MAP2K2 antibody at 0.3ug/ml. Predicted molecular weight: ~45kDa.

## Description

Additional name(s) for this target protein: Mitogen-activated protein kinase kinase 2

## Application Notes

Optimal dilution of the MAP2K2 antibody should be determined by the researcher.

## Immunogen

Amino acids DLKMLTNHTFIKRS were used as the immunogen for this MAP2K2 antibody.

## **Storage**

Aliquot and store the MAP2K2 antibody at -20oC.