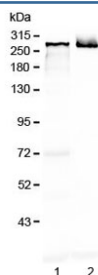


MAP2 Antibody (RQ4187)

Catalog No.	Formulation	Size
RQ4187	0.5mg/ml if reconstituted with 0.2ml sterile DI water	100 ug

[Bulk quote request](#)

Availability	1-3 business days
Species Reactivity	Mouse, Rat
Predicted Reactivity	Human
Format	Antigen affinity purified
Host	Rabbit
Clonality	Polyclonal (rabbit origin)
Isotype	Rabbit IgG
Purity	Antigen affinity purified
Buffer	Lyophilized from 1X PBS with 2% Trehalose and 0.025% sodium azide
UniProt	P11137
Applications	Western Blot : 0.5-1ug/ml Direct ELISA : 0.1-0.5ug/ml
Limitations	This MAP2 antibody is available for research use only.



Western blot testing of 1) rat brain and 2) mouse brain lysate with MAP2 antibody at 0.5ug/ml. Predicted molecular weight ~199 kDa, routinely observed at ~280 kDa.

Description

Microtubule-associated protein 2 is a protein that in humans is encoded by the MAP2 gene. This gene encodes a protein that belongs to the microtubule-associated protein family. The proteins of this family are thought to be involved in microtubule assembly, which is an essential step in neurogenesis. The products of similar genes in rat and mouse are neuron-specific cytoskeletal proteins that are enriched in dendrites, implicating a role in determining and stabilizing

dendritic shape during neuron development. A number of alternatively spliced variants encoding distinct isoforms have been described.

Application Notes

Optimal dilution of the MAP2 antibody should be determined by the researcher.

Immunogen

A recombinant human protein corresponding to amino acids Q64-L133 was used as the immunogen for the MAP2 antibody.

Storage

After reconstitution, the MAP2 antibody can be stored for up to one month at 4°C. For long-term, aliquot and store at -20°C. Avoid repeated freezing and thawing.