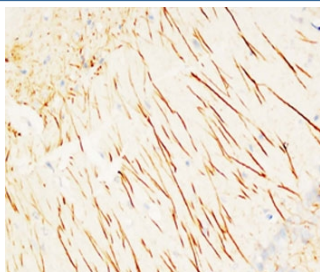


MAP2 Antibody / Microtubule-associated protein 2 [clone HM-2] (R30050)

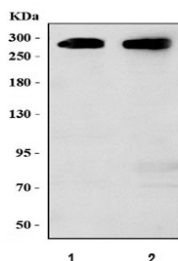
Catalog No.	Formulation	Size
R30050	0.5mg/ml with 1% BSA and 0.01% sodium azide if reconstituted with 0.2ml sterile 1X PBS	100 ug

[Bulk quote request](#)

Availability	1-3 business days
Species Reactivity	Human, Rat, Mouse
Format	Ascites
Host	Mouse
Clonality	Monoclonal (mouse origin)
Isotype	Mouse IgG1
Clone Name	HM-2
Purity	Unpurified ascites
Gene ID	4133
Applications	Western Blot : 0.5-2ug/ml Immunohistochemistry (FFPE) : 1-2ug/ml
Limitations	This MAP2 antibody is available for research use only.



IHC-P testing of rat brain tissue with MAP2 antibody. HIER: Boil the paraffin sections in pH 6, 10mM citrate buffer for 20 minutes and allow to cool prior to testing.



Western blot testing of 1) rat brain and 2) mouse brain tissue lysate with MAP2 antibody. Predicted molecular weight ~200 kDa, commonly observed at ~280 kDa.

Description

MAP2, a 280-kD protein, is highly concentrated in neuronal somata and dendrites. Microtubule-associated protein 2 (MAP2) is a neurosteroid receptor. MAP2 gene contains 19 exons, and located in segment 2q34-q35. The transgenic MAP2c was present in dendrites but not in axons but transgenic MAP2c messenger RNA was limited to cell bodies.

Application Notes

The stated application concentrations are suggested starting points. Titration of the MAP2 antibody may be required due to differences in protocols and secondary/substrate sensitivity.

Immunogen

Rat brain microtubule-associated proteins were used as the immunogen for this MAP2 antibody.

Storage

After reconstitution, the MAP2 antibody can be stored for up to one month at 4°C. For long-term, aliquot and store at -20°C. Avoid repeated freezing and thawing.