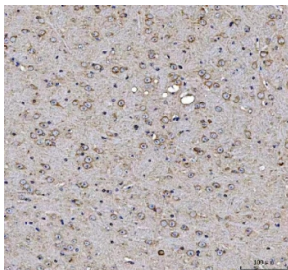


MAP1S Antibody / Microtubule-associated protein 1S (RQ8558)

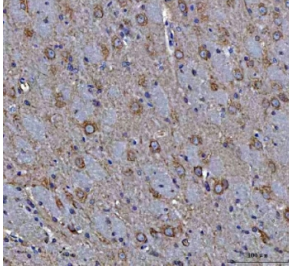
Catalog No.	Formulation	Size
RQ8558	0.5mg/ml if reconstituted with 0.2ml sterile DI water	100 ug

[Bulk quote request](#)

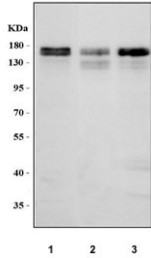
Availability	1-3 days
Species Reactivity	Human, Mouse, Rat
Format	Antigen affinity purified
Host	Rabbit
Clonality	Polyclonal (rabbit origin)
Isotype	Rabbit IgG
Purity	Antigen affinity purified
Buffer	Lyophilized from 1X PBS with 2% Trehalose
UniProt	Q66K74
Applications	Western Blot : 0.5-1ug/ml Immunohistochemistry (FFPE) : 2-5ug/ml Flow Cytometry : 1-3ug/million cells ELISA : 0.1-0.5ug/ml
Limitations	This MAP1S antibody is available for research use only.



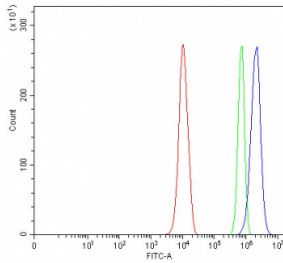
IHC staining of FFPE mouse brain tissue with MAP1S antibody. HIER: boil tissue sections in pH8 EDTA for 20 min and allow to cool before testing.



IHC staining of FFPE rat brain tissue with MAP1S antibody. HIER: boil tissue sections in pH8 EDTA for 20 min and allow to cool before testing.



Western blot testing of human 1) HeLa, 2) RT4 and 3) HepG2 cell lysate with MAP1S antibody. Predicted molecular weight ~112 kDa, commonly observed at 112-150 kDa.



Flow cytometry testing of fixed and permeabilized human PC-3 cells with MAP1S antibody at 1ug/million cells (blocked with goat sera); Red=cells alone, Green=isotype control, Blue= MAP1S antibody.

Description

Microtubule-associated protein 1S is a protein that in humans is encoded by the MAP1S gene. Enables DNA binding activity and cytoskeletal protein binding activity. Involved in microtubule bundle formation; neuron projection morphogenesis; and regulation of chromatin disassembly. Located in several cellular components, including microtubule cytoskeleton; nuclear lumen; and perinuclear region of cytoplasm.

Application Notes

Optimal dilution of the MAP1S antibody should be determined by the researcher.

Immunogen

An E.coli-derived human recombinant protein (amino acids D45-H1021) was used as the immunogen for the MAP1S antibody.

Storage

After reconstitution, the MAP1S antibody can be stored for up to one month at 4oC. For long-term, aliquot and store at -20oC. Avoid repeated freezing and thawing.

