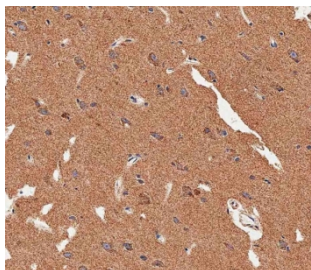


## MAP1LC3B Antibody (F54364)

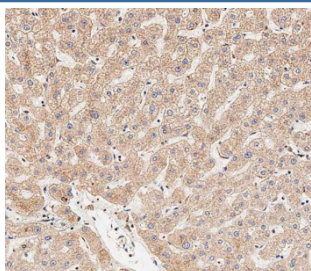
Catalog No.	Formulation	Size
F54364-0.4ML	In 1X PBS, pH 7.4, with 0.09% sodium azide	0.4 ml
F54364-0.08ML	In 1X PBS, pH 7.4, with 0.09% sodium azide	0.08 ml

[Bulk quote request](#)

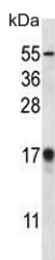
<b>Availability</b>	1-3 business days
<b>Species Reactivity</b>	Human, Mouse
<b>Format</b>	Purified
<b>Host</b>	Rabbit
<b>Clonality</b>	Polyclonal (rabbit origin)
<b>Isotype</b>	Rabbit Ig
<b>Purity</b>	Antigen affinity purified
<b>UniProt</b>	Q9GZQ8
<b>Applications</b>	Immunohistochemistry (FFPE) : 1:25 Flow Cytometry : 1:25 (1x10 <sup>6</sup> cells) Western Blot : 1:500-1:2000
<b>Limitations</b>	This MAP1LC3B antibody is available for research use only.



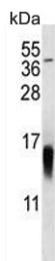
IHC testing of FFPE human brain tissue with MAP1LC3B antibody. HIER: steam section in pH9 EDTA for 20 min and allow to cool prior to staining.



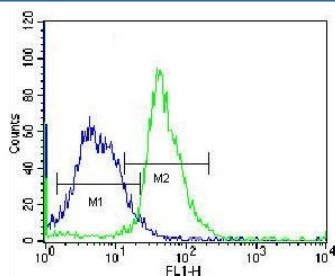
IHC testing of FFPE human liver tissue with MAP1LC3B antibody. HIER: steam section in pH9 EDTA for 20 min and allow to cool prior to staining.



Western blot testing of human HepG2 cell lysate with MAP1LC3B antibody. Predicted molecular weight ~15 kDa.



Western blot testing of mouse NIH 3T3 cell lysate with MAP1LC3B antibody. Predicted molecular weight ~15 kDa.



Flow cytometry testing of fixed and permeabilized human HepG2 cells with MAP1LC3B antibody; Blue=isotype control, Green= MAP1LC3B antibody.

## Description

The product of this gene is a subunit of neuronal microtubule-associated MAP1A and MAP1B proteins, which are involved in microtubule assembly and important for neurogenesis. Studies on the rat homolog implicate a role for this gene in autophagy, a process that involves the bulk degradation of cytoplasmic component.

## Application Notes

The stated application concentrations are suggested starting points. Titration of the MAP1LC3B antibody may be required due to differences in protocols and secondary/substrate sensitivity.

## Immunogen

A portion of amino acids 9-33 from the human protein was used as the immunogen for the MAP1LC3B antibody.

## Storage

Aliquot the MAP1LC3B antibody and store frozen at -20oC or colder. Avoid repeated freeze-thaw cycles.

