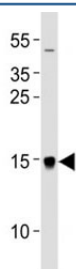


## MAP1LC3A Antibody / LC3A (F52608)

Catalog No.	Formulation	Size
F52608-0.4ML	In 1X PBS, pH 7.4, with 0.09% sodium azide	0.4 ml
F52608-0.08ML	In 1X PBS, pH 7.4, with 0.09% sodium azide	0.08 ml

[Bulk quote request](#)

<b>Availability</b>	1-3 business days
<b>Species Reactivity</b>	Human
<b>Predicted Reactivity</b>	Bovine, Mouse, Rat
<b>Format</b>	Antigen affinity purified
<b>Clonality</b>	Polyclonal (rabbit origin)
<b>Isotype</b>	Rabbit Ig
<b>Purity</b>	Antigen affinity
<b>UniProt</b>	Q9H492
<b>Applications</b>	Western Blot : 1:1000
<b>Limitations</b>	This MAP1LC3A antibody is available for research use only.



Western blot analysis of lysate from U87-MG cell line using MAP1LC3A antibody at 1:1000.

## Description

Ubiquitin-like modifier involved in formation of autophagosomal vacuoles (autophagosomes). Whereas LC3s are involved in elongation of the phagophore membrane, the GABARAP/GATE-16 subfamily is essential for a later stage in autophagosome maturation.

## Application Notes

Titration of the MAP1LC3A antibody may be required due to differences in protocols and secondary/substrate sensitivity.

## Immunogen

This MAP1LC3A antibody was produced from a rabbit immunized with a KLH conjugated synthetic peptide between 100-141 amino acids from the C-terminal region of human MAP1LC3A.

## Storage

Aliquot the MAP1LC3A antibody and store frozen at -20oC or colder. Avoid repeated freeze-thaw cycles.