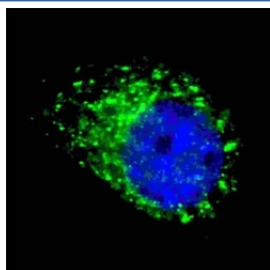


MAP1LC3A Antibody / LC3A (F40815)

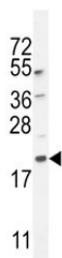
Catalog No.	Formulation	Size
F40815-0.4ML	In 1X PBS, pH 7.4, with 0.09% sodium azide	0.4 ml
F40815-0.08ML	In 1X PBS, pH 7.4, with 0.09% sodium azide	0.08 ml

[Bulk quote request](#)

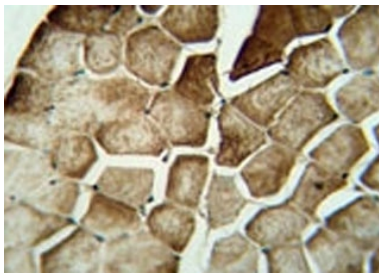
Availability	1-3 business days
Species Reactivity	Human, Mouse
Predicted Reactivity	Bovine
Format	Antigen affinity purified
Clonality	Polyclonal (rabbit origin)
Isotype	Rabbit Ig
Purity	Antigen affinity
UniProt	Q9GZQ8
Applications	Immunofluorescence : 1:100 Western Blot : 1:1000 IHC (Paraffin) : 1:50-1:100
Limitations	This MAP1LC3A antibody is available for research use only.



Fluorescent image of chloroquine treated U251 cells stained with MAP1LC3A antibody (1:100). Immunoreactivity is localized to autophagic vacuoles in the cytoplasm.



MAP1LC3A western blot analysis in mouse lung tissue lysate



MAP1LC3A immunohistochemistry analysis in formalin fixed and paraffin embedded human skeletal muscle.

Description

The product of this gene is a subunit of neuronal microtubule-associated MAP1A and MAP1B proteins, which are involved in microtubule assembly and important for neurogenesis. Studies on the rat homolog implicate a role for this gene in autophagy, a process that involves the bulk degradation of cytoplasmic component.

Application Notes

Titration of the MAP1LC3A antibody may be required due to differences in protocols and secondary/substrate sensitivity.

Immunogen

A portion of amino acids 100-125 from the human protein was used as the immunogen for this MAP1LC3A antibody.

Storage

Aliquot the MAP1LC3A antibody and store frozen at -20oC or colder. Avoid repeated freeze-thaw cycles.