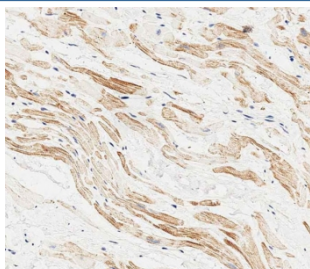


MAP1LC3A antibody (F54514)

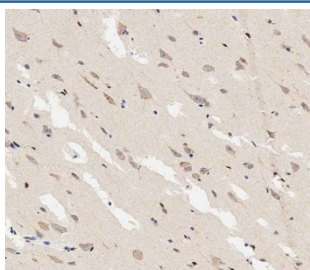
Catalog No.	Formulation	Size
F54514-0.2ML	In 1X PBS, pH 7.4, with 0.09% sodium azide	0.2 ml
F54514-0.05ML	In 1X PBS, pH 7.4, with 0.09% sodium azide	0.05 ml

[Bulk quote request](#)

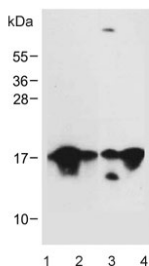
Availability	1-3 business days
Species Reactivity	Human, Mouse, Rat
Format	Purified
Host	Rabbit
Clonality	Polyclonal (rabbit origin)
Isotype	Rabbit Ig
Purity	Antigen affinity purified
UniProt	Q9H492
Localization	Cytoplasmic
Applications	Immunohistochemistry (FFPE) : 1:25 Western Blot : 1:500-1:2000
Limitations	This MAP1LC3A antibody is available for research use only.



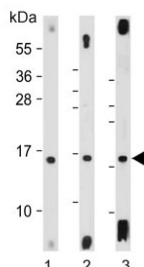
IHC testing of FFPE human heart tissue with MAP1LC3A antibody. HIER: steam section in pH6 citrate buffer for 20 min and allow to cool prior to staining.



IHC testing of FFPE human brain tissue with MAP1LC3A antibody. HIER: steam section in pH6 citrate buffer for 20 min and allow to cool prior to staining.



Western blot testing of 1) human brain, 2) human U-251 MG, 3) mouse NIH 3T3 and 4) mouse brain lysate with MAP1LC3A antibody. Predicted molecular weight ~14 kDa.



Western blot testing of 1) human brain, 2) mouse brain and 3) rat brain lysate with MAP1LC3A antibody. Predicted molecular weight ~14 kDa.

Description

Ubiquitin-like modifier involved in formation of autophagosomal vacuoles (autophagosomes). Whereas LC3s are involved in elongation of the phagophore membrane, the GABARAP/GATE-16 subfamily is essential for a later stage in autophagosome maturation.

Application Notes

The stated application concentrations are suggested starting points. Titration of the MAP1LC3A antibody may be required due to differences in protocols and secondary/substrate sensitivity.

Immunogen

Recombinant human protein was used as the immunogen for the MAP1LC3A antibody.

Storage

Aliquot the MAP1LC3A antibody and store frozen at -20°C or colder. Avoid repeated freeze-thaw cycles.