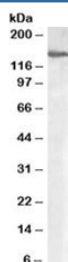


MAN2A1 Antibody (R34486)

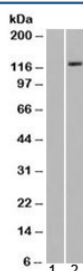
Catalog No.	Formulation	Size
R34486-100UG	0.5 mg/ml in 1X TBS, pH7.3, with 0.5% BSA (US sourced) and 0.02% sodium azide	100 ug

[Bulk quote request](#)

Availability	1-3 business days
Species Reactivity	Human
Format	Antigen affinity purified
Host	Goat
Clonality	Polyclonal (goat origin)
Isotype	Goat Ig
Purity	Antigen affinity
Gene ID	4124
Applications	Western Blot : 0.3-1ug/ml ELISA (peptide) LOD : 1:16000
Limitations	This MAN2A1 antibody is available for research use only.



Western blot testing of human placenta lysate with MAN2A1 antibody at 0.3ug/ml.
Predicted molecular weight: ~131kDa.



Western blot of HEK293 lysate overexpressing Man2A1 probed with MAN2A1 antibody (mock transfection in lane 1). Predicted molecular weight: ~131kDa.

Description

Additional name(s) for this target protein: Mannosidase, alpha, class 2A, member 1

Application Notes

Optimal dilution of the MAN2A1 antibody should be determined by the researcher.

Immunogen

Amino acids KISSDIKSQNR were used as the immunogen for this MAN2A1 antibody.

Storage

Aliquot and store the MAN2A1 antibody at -20oC.