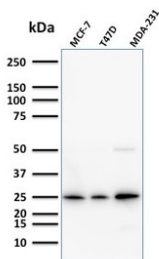


## Mammaglobin Antibody for WB / SCGB2A2 Antibody [clone SPM518] (V7951)

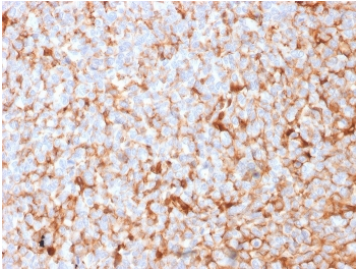
Catalog No.	Formulation	Size
V7951-100UG	0.2 mg/ml in 1X PBS with 0.1 mg/ml BSA (US sourced) and 0.05% sodium azide	100 ug
V7951-20UG	0.2 mg/ml in 1X PBS with 0.1 mg/ml BSA (US sourced) and 0.05% sodium azide	20 ug
V7951SAF-100UG	1 mg/ml in 1X PBS; BSA free, sodium azide free	100 ug

### Bulk quote request

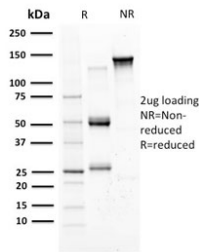
<b>Availability</b>	1-3 business days
<b>Species Reactivity</b>	Human
<b>Format</b>	Purified
<b>Host</b>	Mouse
<b>Clonality</b>	Monoclonal (mouse origin)
<b>Isotype</b>	Mouse IgG1, kappa
<b>Clone Name</b>	SPM518
<b>Purity</b>	Protein G affinity chromatography
<b>UniProt</b>	Q13296
<b>Localization</b>	Cytoplasmic, cell surface, nuclear
<b>Applications</b>	Western Blot : 1-2ug/ml Immunohistochemistry (FFPE) : 1-2ug/ml
<b>Limitations</b>	This Mammaglobin antibody is available for research use only.



Mammaglobin Antibody for WB - western blot analysis. Western blot testing of human cell lysates using Mammaglobin Antibody for WB (clone SPM518). Lane 1: MCF7 cell lysate, Lane 2: T47D cell lysate, Lane 3: MDA-231 cell lysate. A band is detected at approximately 10-21 kDa, consistent with the predicted molecular weight of Mammaglobin / SCGB2A2. Differences in apparent molecular weight may reflect glycosylation and other post-translational modifications that influence migration of this secreted breast-associated protein during SDS-PAGE.



IHC testing of FFPE human breast carcinoma stained with Mammaglobin antibody (clone SPM518). Required HIER: boiling tissue sections in pH 9 10mM Tris with 1mM EDTA for 10-20 min followed by cooling at RT for 20 min.



SDS-PAGE analysis of purified, BSA-free Mammaglobin antibody (clone SPM518) as confirmation of integrity and purity.

## Description

Mammaglobin (SCGB2A2), commonly referred to as Mammaglobin A, is a secreted glycoprotein encoded by the SCGB2A2 gene and is a member of the secretoglobulin family of small epithelial secreted proteins. Mammaglobin Antibody for WB enables western blot detection of this breast-associated protein and supports studies examining Mammaglobin expression in mammary epithelial cells and breast cancer cell lines. Because Mammaglobin is a secreted protein enriched in breast epithelium, immunoblot detection is frequently used to confirm its expression in cultured cells and experimental tissue lysates.

Western blot analysis of Mammaglobin typically reveals bands in the approximately 10-21 kDa range corresponding to Mammaglobin A protein. Variation in apparent molecular weight is commonly observed due to glycosylation and other post-translational modifications that affect migration during SDS-PAGE. Mammaglobin Antibody for WB therefore allows researchers to detect these immunoreactive bands and evaluate Mammaglobin expression levels across different experimental conditions and cell types.

Mammaglobin antibody, also referred to as SCGB2A2 antibody in the literature, detects a protein primarily produced by luminal mammary epithelial cells. In cell lysate preparations used for western blotting, Mammaglobin may be detected in whole cell lysates, secreted protein fractions, or conditioned media depending on the experimental system. Detection of Mammaglobin by immunoblotting is commonly performed in breast cancer cell lines such as T47D and MCF7, which are known to express this breast-associated secretory protein.

Structurally, Mammaglobin A contains conserved cysteine residues characteristic of secretoglobulin proteins, which contribute to its folded structure and secreted protein stability. As a secreted epithelial protein, Mammaglobin participates in glandular secretion pathways within mammary tissue. In western blot experiments, the protein may appear as a single band or as multiple closely migrating species depending on the degree of glycosylation and processing that occurs during secretion.

Western blot detection of Mammaglobin is widely used in studies of breast epithelial biology and breast cancer research. Mammaglobin Antibody for WB (clone SPM518), a mouse monoclonal antibody, provides a reliable reagent for detecting Mammaglobin / SCGB2A2 in SDS-PAGE immunoblot experiments and supports investigations examining breast epithelial differentiation, tumor cell identity, and Mammaglobin expression in breast-derived cell models.

## Application Notes

Optimal dilution of the Mammaglobin Antibody for WB should be determined by the researcher.

## Immunogen

Full length recombinant human protein was used as the immunogen for the Mammaglobin antibody.

## Storage

Store the Mammaglobin antibody at 2-8oC (with azide) or aliquot and store at -20oC or colder (without azide).

## Alternate Names

Mammaglobin A antibody, SCGB2A2 antibody, Mammary gland secretoglobin antibody, Secretoglobin family 2A member 2 antibody, Mammaglobin breast marker antibody