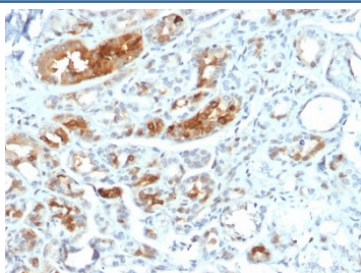


## Mammaglobin Antibody - Protein Microarray Validated / SCGB2A2 Antibody [clone MGB/2000] (V3862)

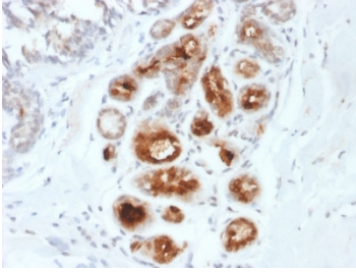
Catalog No.	Formulation	Size
V3862-100UG	0.2 mg/ml in 1X PBS with 0.1 mg/ml BSA (US sourced) and 0.05% sodium azide	100 ug
V3862-20UG	0.2 mg/ml in 1X PBS with 0.1 mg/ml BSA (US sourced) and 0.05% sodium azide	20 ug
V3862SAF-100UG	1 mg/ml in 1X PBS; BSA free, sodium azide free	100 ug

### Bulk quote request

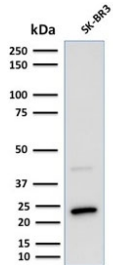
<b>Availability</b>	1-3 business days
<b>Species Reactivity</b>	Human
<b>Format</b>	Purified
<b>Host</b>	Mouse
<b>Clonality</b>	Monoclonal (mouse origin)
<b>Isotype</b>	Mouse IgG1, kappa
<b>Clone Name</b>	MGB/2000
<b>Purity</b>	Protein G affinity chromatography
<b>UniProt</b>	Q13296
<b>Localization</b>	Cytoplasmic, cell surface, nuclear
<b>Applications</b>	Western Blot : 1-2ug/ml Immunohistochemistry (FFPE) : 1-2ug/ml for 30 min at RT
<b>Limitations</b>	This Mammaglobin antibody is available for research use only.



Mammaglobin Antibody - Protein Microarray Validated - immunohistochemistry of human breast carcinoma. FFPE human breast carcinoma tissue was stained with Mammaglobin Antibody - Protein Microarray Validated (clone MGB/2000) to detect Mammaglobin A / SCGB2A2. HRP-DAB brown chromogenic signal highlights cytoplasmic staining in carcinoma epithelial cells within glandular tumor structures, consistent with the secretory localization of this breast-associated protein. Surrounding stromal cells show minimal staining. Heat-induced epitope retrieval was performed by boiling tissue sections in 10mM citrate buffer (pH6) for 10-20 minutes followed by cooling at room temperature for 20 minutes prior to staining.

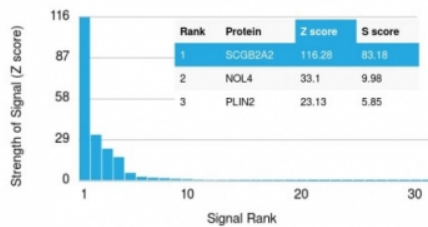


IHC testing of FFPE human breast carcinoma stained with Mammaglobin antibody (MGB/2000). Required HIER: boiling tissue sections in 10mM citrate buffer, pH6, for 10-20 min followed by cooling at RT for 20 min.

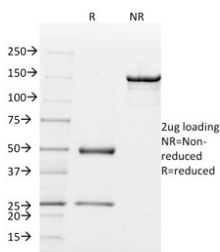


Western blot testing of human SK-BR-3 cell lysate (mammary gland tumor cell line) with Mammaglobin antibody (clone MGB/2000). Expected molecular weight: 10-21 kDa depending on level of glycosylation.

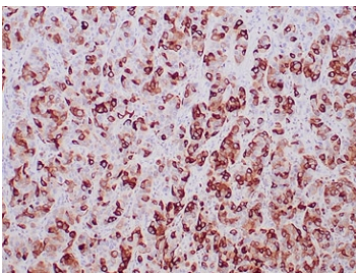
#### Human Protein Microarray Specificity Validation



Mammaglobin Antibody - Protein Microarray Validated clone MGB/2000 - microarray specificity validation. Analysis of a HuProt(TM) microarray containing more than 19,000 full-length human proteins was performed using Mammaglobin Antibody - Protein Microarray Validated (clone MGB/2000). The strongest binding signal corresponds to SCGB2A2 (Mammaglobin A), which ranks first on the array, demonstrating high specificity of the MGB/2000 mouse monoclonal antibody for its intended target. Z- and S-scores quantify antibody binding strength and target specificity. The Z-score represents the signal intensity produced when the antibody, together with a fluorescently labeled anti-IgG secondary antibody, binds to a protein on the array and is expressed as standard deviations above the mean signal of the array. When proteins are ordered by descending Z-score, the S-score represents the difference between adjacent Z-scores and therefore reflects the relative specificity of the antibody for its target protein.



SDS-PAGE analysis of purified, BSA-free Mammaglobin antibody (clone MGB/2000) as confirmation of integrity and purity.



Mammaglobin Antibody - Protein Microarray Validated - immunohistochemistry of human breast adenocarcinoma. FFPE human breast adenocarcinoma tissue was stained with Mammaglobin Antibody - Protein Microarray Validated (clone MGB/2000) to detect Mammaglobin A / SCGB2A2. HRP-DAB brown chromogenic signal highlights cytoplasmic staining in carcinoma epithelial cells distributed throughout the tumor tissue, consistent with expression of this breast-associated secretory protein in malignant mammary epithelial cells. Surrounding stromal elements show minimal staining. Heat-induced epitope retrieval was performed by boiling tissue sections in pH 9 10mM Tris with 1mM EDTA for 20 minutes followed by cooling prior to staining.

## Description

Mammaglobin, also called Secretoglobin family 2A member 2, or SCGB2A2, is a 93 amino acid glycoprotein with homology to other secretoglobin-uteroglobin family members. It was originally identified as a breast cancer restricted

biomarker by differential screening. Mammaglobin related to secretoglobin family that includes human uteroglobin and lipophilin. Mammaglobin antibody stains cytoplasm of normal breast epithelial cells as well as primary and metastatic breast carcinomas. Mammaglobin expression is absent in prostate, kidney, colon, rectum, small intestine, stomach, pancreas, lung, and thyroid tissues. Mammaglobin may be used as part of an immunohistochemical panel for determination of metastatic breast carcinoma and tumor of unknown primary origin.

## Application Notes

Optimal dilution of the Mammaglobin Antibody - Protein Microarray Validated should be determined by the researcher.

## Immunogen

Full length recombinant human protein was used as the immunogen for the Mammaglobin antibody.

## Storage

Store the Mammaglobin antibody at 2-8oC (with azide) or aliquot and store at -20oC or colder (without azide).

## Alternate Names

Mammaglobin A antibody, SCGB2A2 antibody, Mammary gland secretoglobin antibody, Secretoglobin family 2A member 2 antibody, Mammaglobin breast marker antibody