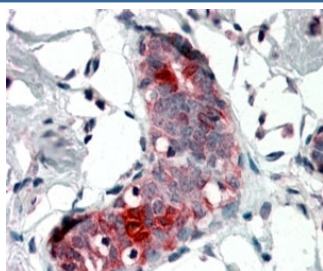


Mammaglobin A Antibody / SCGB2A2 (R34879)

| Catalog No. | Formulation | Size |
|--------------|---|--------|
| R34879-100UG | 0.5 mg/ml in 1X TBS, pH7.3, with 0.5% BSA (US sourced) and 0.02% sodium azide | 100 ug |

[Bulk quote request](#)

| | |
|--------------------|---|
| Availability | 1-3 business days |
| Species Reactivity | Human |
| Format | Antigen affinity purified |
| Clonality | Polyclonal (goat origin) |
| Isotype | Goat Ig |
| Purity | Antigen affinity |
| Gene ID | 4250 |
| Localization | Cytoplasmic, cell surface, nuclear |
| Applications | Immunohistochemistry (FFPE) : 4-6ug/ml ELISA (peptide) LOD : 1:32000 |
| Limitations | This Mammaglobin A antibody is available for research use only. |



IHC testing of FFPE human breast with Mammaglobin A antibody at 4ug/ml. HIER: steamed with pH6 citrate buffer, AP-staining.

Description

Additional name(s) for this target protein: Secretoglobin family 2A member 2; SCGB2A2

Application Notes

Optimal dilution of the Mammaglobin A antibody should be determined by the researcher.

Immunogen

Amino acids NPQVSKTEYKEL were used as the immunogen for this Mammaglobin A antibody.

Storage

Aliquot and store the Mammaglobin A antibody at -20oC.