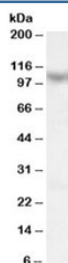


MAML1 Antibody (R36333)

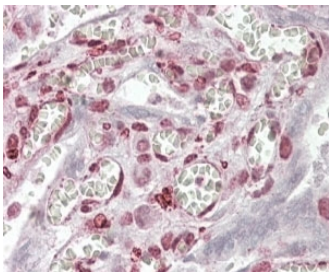
Catalog No.	Formulation	Size
R36333-100UG	0.5 mg/ml in 1X TBS, pH7.3, with 0.5% BSA (US sourced) and 0.02% sodium azide	100 ug

[Bulk quote request](#)

Availability	1-3 business days
Species Reactivity	Human
Predicted Reactivity	Mouse
Format	Antigen affinity purified
Host	Goat
Clonality	Polyclonal (goat origin)
Isotype	Goat Ig
Purity	Antigen affinity
Gene ID	9794
Applications	Western Blot : 0.1-0.3ug/ml Immunohistochemistry (FFPE) : 2.5-5ug/ml ELISA (peptide) LOD : 1:128000
Limitations	This MAML1 antibody is available for research use only.



Western blot testing of human skeletal muscle lysate with MAML1 antibody at 0.1ug/ml.
Predicted molecular weight: ~108kDa.



IHC staining of FFPE human placenta with MAML1 antibody at 4ug/ml. HIER: steamed with pH6 citrate buffer, AP-staining.

Description

Additional name(s) for this target protein: Mastermind-like 1

Application Notes

Optimal dilution of the MAML1 antibody should be determined by the researcher.

Immunogen

Amino acids VLPTCPMAEFALPR were used as the immunogen for this MAML1 antibody.

Storage

Aliquot and store the MAML1 antibody at -20oC.