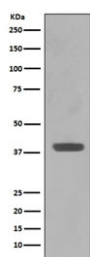


## Maltose Binding Protein Antibody / malE / MBP tag [clone AIF-13] (RQ5298)

Catalog No.	Formulation	Size
RQ5298	Antibody in PBS with 0.02% sodium azide, 50% glycerol and 0.4-0.5mg/ml BSA	100 ul

[Bulk quote request](#)

Availability	1-2 weeks
Species Reactivity	E. Coli derived MBP
Format	Purified
Clonality	Rabbit Monoclonal
Isotype	Rabbit IgG
Clone Name	AIF-13
Purity	Affinity purified
UniProt	P0AEX9
Applications	Western Blot : 1:500-1:2000
Limitations	This Maltose Binding Protein antibody is available for research use only.



Western blot testing of E. coli lysate with Maltose Binding Protein antibody. Predicted molecular weight ~43 kDa.

### Description

Part of the ABC transporter complex MalEFGK involved in maltose/maltodextrin import. Binds maltose and higher maltodextrins such as maltotriose. [UniProt]

### Application Notes

Optimal dilution of the Maltose Binding Protein antibody should be determined by the researcher.

### Immunogen

A synthetic peptide specific to E. coli Maltose Binding Protein / malE was used as the immunogen for the Maltose Binding Protein antibody.

## Storage

Store the Maltose Binding Protein antibody at -20oC.