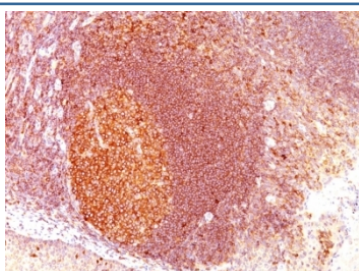


## MALT1 Antibody [clone SPM578] (V9006)

Catalog No.	Formulation	Size
V9006-100UG	0.2 mg/ml in 1X PBS with 0.1 mg/ml BSA (US sourced) and 0.05% sodium azide	100 ug
V9006-20UG	0.2 mg/ml in 1X PBS with 0.1 mg/ml BSA (US sourced) and 0.05% sodium azide	20 ug
V9006SAF-100UG	1 mg/ml in 1X PBS; BSA free, sodium azide free	100 ug
V9006IHC-7ML	Prediluted in 1X PBS with 0.1 mg/ml BSA (US sourced) and 0.05% sodium azide; *For IHC use only*	7 ml

[Bulk quote request](#)

<b>Availability</b>	1-3 business days
<b>Species Reactivity</b>	Human
<b>Format</b>	Purified
<b>Clonality</b>	Monoclonal (mouse origin)
<b>Isotype</b>	Mouse IgG1, kappa
<b>Clone Name</b>	SPM578
<b>Purity</b>	Protein G affinity chromatography
<b>UniProt</b>	Q9UDY8
<b>Localization</b>	Cytoplasmic
<b>Applications</b>	Immunohistochemistry (FFPE) : 1-2ug/ml for 30 min at RT
<b>Limitations</b>	This MALT1 antibody is available for research use only.



IHC: Formalin-fixed, paraffin-embedded human tonsil stained with MALT1 antibody (clone SPM578).

## Description

Mucosa associated lymphoid tissue lymphoma translocation gene 1 (MALT-1) is found in extranodal low-grade B cell lymphomas. The gene encodes two Ig-like C2-type domains and fuses with an API2 gene, which is highly expressed in adult lymphoid tissue. The translocation of this MALT-1 gene and the apoptosis-inhibiting API2 gene results in an increased development of MALT lymphomas and apoptosis inhibition. Sites at which this API2-MALT1 (11;18)(q21;q21) translocation commonly occurs are within human lung and kidney tissue. MALT lymphoma expresses nuclear Bcl10, which mediates the oligomerization and activation of a MALT-1 caspase-like domain. MALT-1 mRNA is found in pre-B cells, mature B cells and plasma cells.

## Application Notes

The optimal dilution of the MALT1 antibody for each application should be determined by the researcher.

1. Staining of formalin-fixed tissues requires boiling tissue sections in pH 9 10mM Tris with 1mM EDTA for 10-20 min followed by cooling at RT for 20 minutes.
2. The prediluted format is supplied in a dropper bottle and is optimized for use in IHC. After epitope retrieval step (if required), drip mAb solution onto the tissue section and incubate at RT for 30 min.

## Immunogen

Amino acids 701-808 from the human protein were used as the immunogen for this MALT1 antibody.

## Storage

Store the MALT1 antibody at 2-8oC (with azide) or aliquot and store at -20oC or colder (without azide).