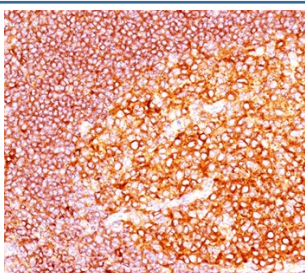


MALT1 Antibody [clone MT1/410] (V2307)

Catalog No.	Formulation	Size
V2307-100UG	0.2 mg/ml in 1X PBS with 0.1 mg/ml BSA (US sourced) and 0.05% sodium azide	100 ug
V2307-20UG	0.2 mg/ml in 1X PBS with 0.1 mg/ml BSA (US sourced) and 0.05% sodium azide	20 ug
V2307SAF-100UG	1 mg/ml in 1X PBS; BSA free, sodium azide free	100 ug
V2307IHC-7ML	Prediluted in 1X PBS with 0.1 mg/ml BSA (US sourced) and 0.05% sodium azide; *For IHC use only*	7 ml

[Bulk quote request](#)

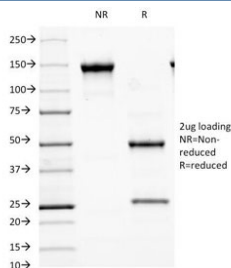
Species Reactivity	Human
Format	Purified
Clonality	Monoclonal (mouse origin)
Isotype	Mouse IgG1, kappa
Clone Name	MT1/410
Purity	Protein G purified monoclonal antibody
Buffer	1X PBS, pH 7.4
Gene ID	10892
Localization	Cytoplasmic
Applications	Western Blot : 1-2ug/ml Immunohistochemistry (FFPE) : 1-2ug/ml for 30 min at RT (1) (2)
Limitations	This MALT1 antibody is available for research use only.



IHC staining of FFPE human tonsil tissue with MALT1 antibody (clone MT1/410).



Western blot analysis of Daudi lysate and MALT1 antibody. Expected molecular weight ~92 kDa.



SDS-PAGE Analysis of Purified, BSA-Free MALT1 Antibody (clone MT1/410). Confirmation of Integrity and Purity of the Antibody.

Description

Mucosa associated lymphoid tissue lymphoma translocation gene 1 is found in extranodal low-grade B cell lymphomas. It encodes two Ig-like C2-type domains and fuses with an API2 gene, which is highly expressed in adult lymphoid tissue. The translocation of the MALT1 gene, which maps to human chromosome 18q21, and the apoptosis-inhibiting API2 gene results in an increased development of MALT lymphomas and apoptosis inhibition. Sites at which this API2-MALT1 (11;18)(q21;q21) translocation commonly occurs are within human lung and kidney tissue. MALT lymphoma expresses nuclear $\tilde{\hat{\Delta}}\frac{1}{2}$ [Bcl10](#), which mediates the oligomerization and activation of a caspase-like domain. MALT1 mRNA is found in pre-B cells, mature B cells and plasma cells.

Application Notes

The concentration stated for each application is a general starting point. Variations in protocols, secondaries and substrates may require the antibody to be titrated up or down for optimal performance.

1. Staining of formalin-fixed tissues requires boiling tissue sections in pH 9 10mM Tris with 1mM EDTA for 10-20 min followed by cooling at RT for 20 minutes.
2. The prediluted format is supplied in a dropper bottle and is optimized for use in IHC. After epitope retrieval step (if required), drip mAb solution onto the tissue section and incubate at RT for 30 min.

Immunogen

A recombinant fragment (aa 701-808) was used as the immunogen for this antibody.

Storage

Store the MALT1 antibody at 2-8oC (with azide) or aliquot and store at -20oC or colder (without azide).

Alternate Names

Caspase-like protein, MALT lymphoma-associated translocation, MLT1, Mucosa-associated lymphoid tissue lymphoma translocation protein 1, Paracaspase, MALT1 antibody

References (1)

