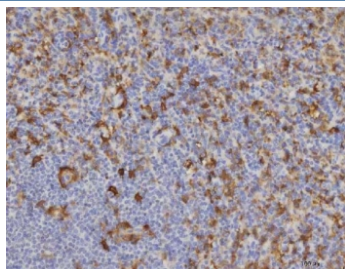


Malic enzyme 1 Antibody / ME1 [clone 5E5F7] (RQ7391)

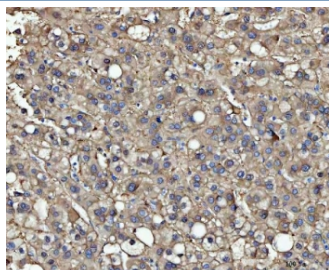
Catalog No.	Formulation	Size
RQ7391	0.5mg/ml if reconstituted with 0.2ml sterile DI water	100 ug

Bulk quote request

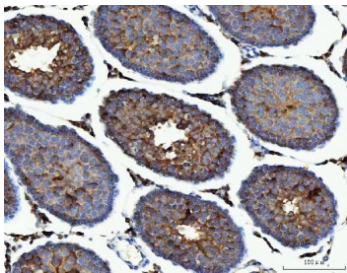
Availability	1-3 business days
Species Reactivity	Human, Mouse, Rat
Format	Antigen affinity purified
Clonality	Monoclonal (mouse origin)
Isotype	Mouse IgG1
Clone Name	5E5F7
Purity	Antigen affinity purified
Buffer	Lyophilized from 1X PBS with 2% Trehalose
UniProt	P48163
Localization	Cytoplasm, nucleus, cell membrane
Applications	Western Blot : 0.5-1ug/ml Immunohistochemistry (FFPE) : 2-5ug/ml
Limitations	This Malic enzyme 1 antibody is available for research use only.



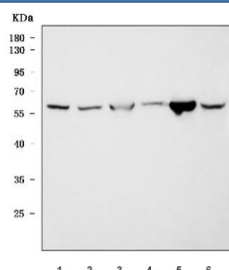
IHC staining of FFPE human spleen tissue with Malic enzyme 1 antibody. HIER: boil tissue sections in pH8 EDTA for 20 min and allow to cool before testing.



IHC staining of FFPE human liver cancer tissue with Malic enzyme 1 antibody. HIER: boil tissue sections in pH8 EDTA for 20 min and allow to cool before testing.



IHC staining of FFPE rat testis tissue with Malic enzyme 1 antibody. HIER: boil tissue sections in pH8 EDTA for 20 min and allow to cool before testing.



Western blot testing of 1) human A549, 2) human HeLa, 3) rat testis, 4) rat brain, 5) mouse testis and 6) mouse brain tissue lysate with Malic enzyme 1 antibody. Predicted molecular weight ~64 kDa and ~55 kDa (two isoforms).

Description

NADP-dependent malic enzyme (Malic enzyme 1) is a protein that in humans is encoded by the ME1 gene. This gene encodes a cytosolic, NADP-dependent enzyme that generates NADPH for fatty acid biosynthesis. The activity of this enzyme, the reversible oxidative decarboxylation of malate, links the glycolytic and citric acid cycles. The regulation of expression for this gene is complex. Increased expression can result from elevated levels of thyroid hormones or by higher proportions of carbohydrates in the diet.

Application Notes

Optimal dilution of the Malic enzyme 1 antibody should be determined by the researcher.

Immunogen

Recombinant human protein (amino acids M1-Q572) was used as the immunogen for the Malic enzyme 1 antibody.

Storage

After reconstitution, the Malic enzyme 1 antibody can be stored for up to one month at 4oC. For long-term, aliquot and store at -20oC. Avoid repeated freezing and thawing.