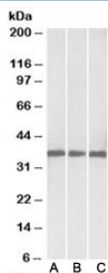


## Malate dehydrogenase 1 Antibody (R34984)

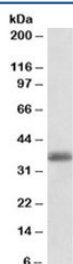
Catalog No.	Formulation	Size
R34984-100UG	0.5 mg/ml in 1X TBS, pH7.3, with 0.5% BSA (US sourced) and 0.02% sodium azide	100 ug

[Bulk quote request](#)

<b>Availability</b>	1-3 business days
<b>Species Reactivity</b>	Human, Mouse, Rat, Pig
<b>Format</b>	Antigen affinity purified
<b>Host</b>	Goat
<b>Clonality</b>	Polyclonal (goat origin)
<b>Isotype</b>	Goat Ig
<b>Purity</b>	Antigen affinity
<b>Gene ID</b>	4190
<b>Applications</b>	Western Blot : 0.03-0.1ug/ml ELISA (peptide) LOD : 1:16000
<b>Limitations</b>	This Malate dehydrogenase 1 antibody is available for research use only.



Western blot testing of human [A], mouse [B] and rat [C] heart lysates with Malate dehydrogenase 1 antibody at 0.03ug/ml. Predicted molecular weight: ~36kDa.



Western blot of pig heart lysates with Malate dehydrogenase 1 antibody at 0.1ug/ml. Predicted molecular weight: ~36kDa.

## Description

Additional name(s) for this target protein: MDHA, MOR2; MDH1

## Application Notes

Optimal dilution of the Malate dehydrogenase 1 antibody should be determined by the researcher.

## Immunogen

Amino acids PDVNHAKVKLQ GK were used as the immunogen for this Malate dehydrogenase 1 antibody.

## Storage

Aliquot and store the Malate dehydrogenase 1 antibody at -20oC.