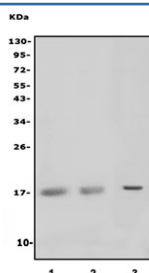


MAL Antibody / Myelin and lymphocyte protein (RQ6195)

Catalog No.	Formulation	Size
RQ6195	0.5mg/ml if reconstituted with 0.2ml sterile DI water	100 ug

Bulk quote request

Availability	1-3 business days
Species Reactivity	Human
Format	Antigen affinity purified
Clonality	Polyclonal (rabbit origin)
Isotype	Rabbit IgG
Purity	Affinity purified
Buffer	Lyophilized from 1X PBS with 2% Trehalose and 0.0125% sodium azide
UniProt	P21145
Applications	Western Blot : 1-2ug/ml
Limitations	This MAL antibody is available for research use only.



Western blot testing of human 1) Jurkat, 2) Raji and 3) HL60 cell lysate with MAL antibody. Predicted molecular weight ~17 kDa.

Description

Myelin and lymphocyte protein is a protein that in humans is encoded by the MAL gene. The protein encoded by this gene is a highly hydrophobic integral membrane protein belonging to the MAL family of proteolipids. The protein has been localized to the endoplasmic reticulum of T-cells and is a candidate linker protein in T-cell signal transduction. In addition, this proteolipid is localized in compact myelin of cells in the nervous system and has been implicated in myelin biogenesis and/or function. The protein plays a role in the formation, stabilization and maintenance of glycosphingolipid-enriched membrane microdomains. Down-regulation of this gene has been associated with a variety of human epithelial malignancies. Alternative splicing produces four transcript variants which vary from each other by the presence or absence of alternatively spliced exons 2 and 3.

Application Notes

Optimal dilution of the MAL antibody should be determined by the researcher.

Immunogen

Amino acids HAVFSLIRWKSS from the human protein were used as the immunogen for the MAL antibody.

Storage

After reconstitution, the MAL antibody can be stored for up to one month at 4oC. For long-term, aliquot and store at -20oC. Avoid repeated freezing and thawing.