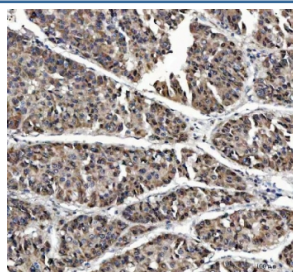


## MAGEL2 Antibody / MAGE-like protein 2 (RQ8630)

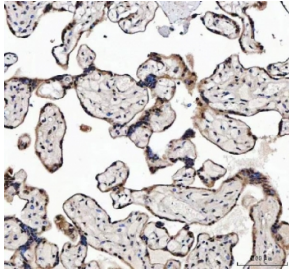
Catalog No.	Formulation	Size
RQ8630	0.5mg/ml if reconstituted with 0.2ml sterile DI water	100 ug

**Bulk quote request**

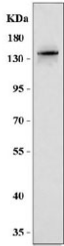
<b>Availability</b>	1-3 days
<b>Species Reactivity</b>	Human
<b>Format</b>	Antigen affinity purified
<b>Clonality</b>	Polyclonal (rabbit origin)
<b>Isotype</b>	Rabbit IgG
<b>Purity</b>	Antigen affinity purified
<b>Buffer</b>	Lyophilized from 1X PBS with 2% Trehalose
<b>UniProt</b>	Q9UJ55
<b>Localization</b>	Cytoplasm, Nucleus
<b>Applications</b>	Western Blot : 0.5-1ug/ml Immunohistochemistry (FFPE) : 2-5ug/ml Flow Cytometry : 1-3ug/million cells ELISA : 0.1-0.5ug/ml
<b>Limitations</b>	This MAGEL2 antibody is available for research use only.



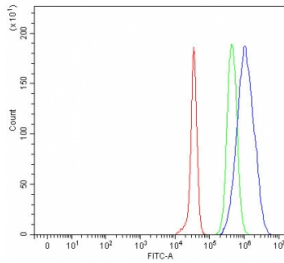
IHC staining of FFPE human liver cancer tissue with MAGEL2 antibody. HIER: boil tissue sections in pH8 EDTA for 20 min and allow to cool before testing.



IHC staining of FFPE human placental tissue with MAGEL2 antibody. HIER: boil tissue sections in pH8 EDTA for 20 min and allow to cool before testing.



Western blot testing of human U-251 cell lysate with MAGEL2 antibody. Predicted molecular weight ~133 kDa.



Flow cytometry testing of fixed and permeabilized human JK cells with MAGEL2 antibody at 1ug/million cells (blocked with goat sera); Red=cells alone, Green=isotype control, Blue= MAGEL2 antibody.

## Description

Prader-Willi syndrome (PWS) is caused by the loss of expression of imprinted genes in chromosome 15q11-q13 region. Affected individuals exhibit neonatal hypotonia, developmental delay, and childhood-onset obesity. Necdin (NDN), a gene involved in the terminal differentiation of neurons, localizes to this region of the genome and has been implicated as one of the genes responsible for the etiology of PWS. This gene is structurally similar to NDN, is also localized to the PWS chromosomal region, and is paternally imprinted, suggesting a possible role for it in PWS.

## Application Notes

Optimal dilution of the MAGEL2 antibody should be determined by the researcher.

## Immunogen

An E.coli-derived human recombinant protein (amino acids Q578-A847) was used as the immunogen for the MAGEL2 antibody.

## Storage

After reconstitution, the MAGEL2 antibody can be stored for up to one month at 4oC. For long-term, aliquot and store at -20oC. Avoid repeated freezing and thawing.

