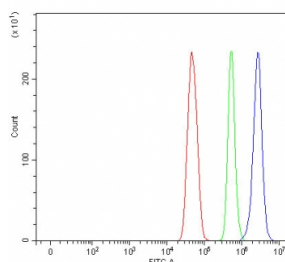


MAGEC3 Antibody (RQ8450)

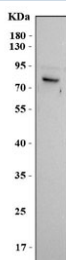
Catalog No.	Formulation	Size
RQ8450	0.5mg/ml if reconstituted with 0.2ml sterile DI water	100 ug

Bulk quote request

Availability	1-3 business days
Species Reactivity	Human
Format	Antigen affinity purified
Clonality	Polyclonal (rabbit origin)
Isotype	Rabbit IgG
Purity	Antigen affinity purified
Buffer	Lyophilized from 1X PBS with 2% Trehalose
UniProt	Q8TD91
Applications	Western Blot : 0.5-1ug/ml Flow Cytometry : 1-3ug/million cells Direct ELISA : 0.1-0.5ug/ml
Limitations	This MAGEC3 antibody is available for research use only.



Flow cytometry testing of fixed and permeabilized human U-251 cells with MAGEC3 antibody at 1ug/million cells (blocked with goat sera); Red=cells alone, Green=isotype control, Blue= MAGEC3 antibody.



Western blot testing of human A375 cell lysate with MAGEC3 antibody. Predicted molecular weight ~72 kDa.

Description

This gene is a member of the MAGEC gene family. The members of this family are not expressed in normal tissues, except for testis, and are expressed in tumors of various histological types. The MAGEC genes are clustered on chromosome Xq26-q27. Two transcript variants encoding distinct isoforms have been found for this gene.

Application Notes

Optimal dilution of the MAGEC3 antibody should be determined by the researcher.

Immunogen

An E.coli-derived human recombinant protein (M1-E534) was used as the immunogen for the MAGEC3 antibody.

Storage

After reconstitution, the MAGEC3 antibody can be stored for up to one month at 4oC. For long-term, aliquot and store at -20oC. Avoid repeated freezing and thawing.