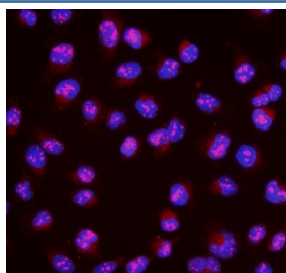


## MAFA Antibody (RQ5630)

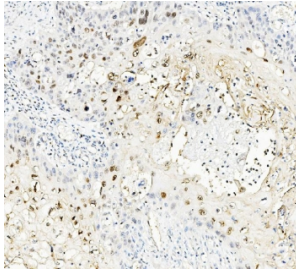
Catalog No.	Formulation	Size
RQ5630	0.5mg/ml if reconstituted with 0.2ml sterile DI water	100 ug

### Bulk quote request

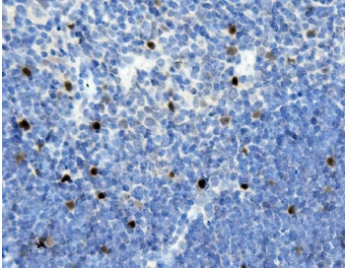
<b>Availability</b>	1-3 business days
<b>Species Reactivity</b>	Human, Mouse
<b>Format</b>	Antigen affinity purified
<b>Host</b>	Rabbit
<b>Clonality</b>	Polyclonal
<b>Isotype</b>	Rabbit IgG
<b>Purity</b>	Affinity purified
<b>Buffer</b>	Lyophilized from 1X PBS with 2% Trehalose and 0.025% sodium azide
<b>UniProt</b>	Q8NHW3
<b>Localization</b>	Nuclear
<b>Applications</b>	Western Blot : 0.5-1ug/ml Immunohistochemistry : 1-2ug/ml Immunofluorescence : 2-4ug/ml Flow Cytometry : 1-3ug/million cells Direct ELISA : 0.1-0.5ug/ml
<b>Limitations</b>	This MAFA antibody is available for research use only.



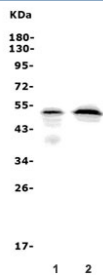
Immunofluorescent staining of FFPE human U-2 OS cells with MAFA antibody (red) and DAPI nuclear stain (blue). HIER: steam section in pH6 citrate buffer for 20 min.



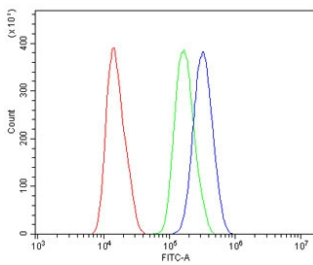
IHC staining of FFPE human esophagus squama cancer with MAFA antibody. HIER: boil tissue sections in pH8 EDTA for 20 min and allow to cool before testing.



IHC staining of FFPE mouse thymus with MAFA antibody. HIER: boil tissue sections in pH8 EDTA for 20 min and allow to cool before testing.



Western blot testing of human 1) HEK293 and 2) K562 lysate with MAFA antibody. Expected molecular weight ~37 kDa.



Flow cytometry testing of human SiHa cells with MAFA antibody at 1ug/million cells (blocked with goat sera); Red=cells alone, Green=isotype control, Blue= MAFA antibody.

## Description

MAFA is a transcription factor that binds RIPE3b, a conserved enhancer element that regulates pancreatic beta cell-specific expression of the insulin gene. It is mapped to 8q24.3.

## Application Notes

Optimal dilution of the MAFA antibody should be determined by the researcher.

## Immunogen

Recombinant human protein (amino acids A9-D308) was used as the immunogen for the MAFA antibody.

## Storage

After reconstitution, the MAFA antibody can be stored for up to one month at 4°C. For long-term, aliquot and store at -20°C. Avoid repeated freezing and thawing.

