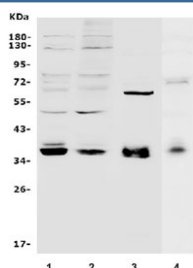


## MAFA Antibody (R32282)

Catalog No.	Formulation	Size
R32282	0.5mg/ml if reconstituted with 0.2ml sterile DI water	100 ug

**Bulk quote request**

<b>Availability</b>	1-3 business days
<b>Species Reactivity</b>	Human, Rat
<b>Format</b>	Antigen affinity purified
<b>Clonality</b>	Polyclonal (rabbit origin)
<b>Isotype</b>	Rabbit IgG
<b>Purity</b>	Antigen affinity
<b>Buffer</b>	Lyophilized from 1X PBS with 2.5% BSA and 0.025% sodium azide
<b>UniProt</b>	Q8NHW3
<b>Applications</b>	Western Blot : 0.1-0.5ug/ml
<b>Limitations</b>	This MAFA antibody is available for research use only.



Western blot testing of human 1) HEK293, 2) K562, 3) 22RV1 and 4) rat PC-12 lysate with MAFA antibody. Predicted molecular weight ~37 kDa.

## Description

MAFA is a transcription factor that binds RIPE3b, a conserved enhancer element that regulates pancreatic beta cell-specific expression of the insulin gene. MAFA plays a key role in coordinating and controlling the level of insulin gene expression in islet beta cells. It is located in 8q24.3. The intracellular domain of MAFA contains a single immunoreceptor tyrosine-based inhibitory motif (ITIM), which classifies MAFA as a member of an inhibitory receptor superfamily. The inhibitory capacity of MAFA is best defined in mast cells, where MAFA keeps in check the antigen-induced (i.e. Fc epsilon RI-induced) secretion of inflammatory mediators.

## Application Notes

Optimal dilution of the MAFA antibody should be determined by the researcher.

## Immunogen

Amino acids EDAVEALIGSGHHGAHHGAHHPAAAAAYEAFR of human MAFA were used as the immunogen for the MAFA antibody.

## Storage

After reconstitution, the MAFA antibody can be stored for up to one month at 4oC. For long-term, aliquot and store at -20oC. Avoid repeated freezing and thawing.