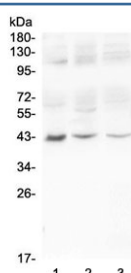


## MADCAM1 Antibody (RQ4529)

| Catalog No. | Formulation   | Size   |
|-------------|---|--------|
| RQ4529      | 0.5mg/ml if reconstituted with 0.2ml sterile DI water | 100 ug |

**Bulk quote request**

|                           |   |
|---------------------------|---|
| <b>Availability</b>       | 1-3 business days   |
| <b>Species Reactivity</b> | Human   |
| <b>Format</b>             | Antigen affinity purified   |
| <b>Clonality</b>          | Polyclonal (rabbit origin)  |
| <b>Isotype</b>            | Rabbit IgG  |
| <b>Purity</b>             | Antigen affinity  |
| <b>Buffer</b>             | Lyophilized from 1X PBS with 2% Trehalose and 0.025% sodium azide |
| <b>UniProt</b>            | Q13477  |
| <b>Applications</b>       | Western Blot : 0.5-1ug/ml   |
| <b>Limitations</b>        | This MADCAM1 antibody is available for research use only.         |



Western blot testing of MADCAM1 antibody in HeLa cell lysate. Predicted molecular weight ~40 kDa.

## Description

Mucosal Vascular Addressin Cell Adhesion Molecule 1 is a protein that in humans is encoded by the MADCAM1 gene. By PCR-based analysis of somatic cell hybrids, Leung et al.(1997) mapped the gene to chromosome 19. The protein encoded by this gene is an endothelial cell adhesion molecule that interacts preferentially with the leukocyte beta7 integrin LPAM-1(alpha4 / beta7), L-selectin, and VLA-4(alpha4/beta1) on myeloid cells to direct leukocytes into mucosal and inflamed tissues. It is a member of the immunoglobulin superfamily and is similar to ICAM-1 and VCAM-1.

## Application Notes

The stated application concentrations are suggested starting amounts. Titration of the MADCAM1 antibody may be

required due to differences in protocols and secondary/substrate sensitivity.

## Immunogen

Amino acids QELEGAQALGPEVQEEEEEPQGDEDVLFRTTERWRL were used as the immunogen for this MADCAM1 antibody.

## Storage

After reconstitution, the MADCAM1 antibody can be stored for up to one month at 4°C. For long-term, aliquot and store at -20°C. Avoid repeated freezing and thawing.