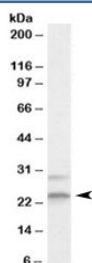


MAD2L1 Antibody (R34683)

Catalog No.	Formulation	Size
R34683-100UG	0.5 mg/ml in 1X TBS, pH7.3, with 0.5% BSA (US sourced) and 0.02% sodium azide	100 ug

[Bulk quote request](#)

Availability	1-3 business days
Species Reactivity	Human
Predicted Reactivity	Cow, Dog, Mouse, Pig, Rat
Format	Antigen affinity purified
Host	Goat
Clonality	Polyclonal (goat origin)
Isotype	Goat Ig
Purity	Antigen affinity
Gene ID	4085
Applications	Western Blot : 2-4ug/ml ELISA (peptide) LOD : 1:32000
Limitations	This MAD2L1 antibody is available for research use only.



Western blot testing of HEK293 lysate with MAD2L1 antibody at 2ug/ml. The expected ~24kDa band and the additional ~29kDa band are blocked by the immunizing peptide.

Description

Additional name(s) for this target protein: MAD2-like 1

Application Notes

Optimal dilution of the MAD2L1 antibody should be determined by the researcher.

Immunogen

Amino acids KVNSMVAYKIPVND were used as the immunogen for this MAD2L1 antibody.

Storage

Aliquot and store the MAD2L1 antibody at -20oC.