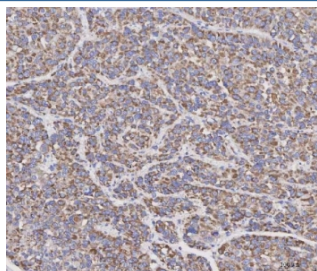


## MAD2B Antibody / MAD2L2 / REV7 (RQ8290)

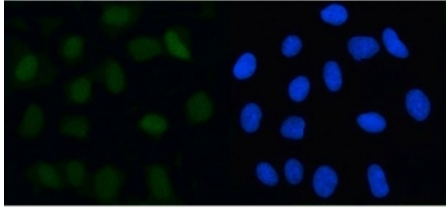
| Catalog No. | Formulation                                           | Size   |
|-------------|-------------------------------------------------------|--------|
| RQ8290      | 0.5mg/ml if reconstituted with 0.2ml sterile DI water | 100 ug |

**Bulk quote request**

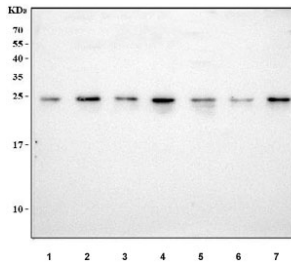
|                           |                                                                                                                                                                           |
|---------------------------|---------------------------------------------------------------------------------------------------------------------------------------------------------------------------|
| <b>Availability</b>       | 1-3 business days                                                                                                                                                         |
| <b>Species Reactivity</b> | Human                                                                                                                                                                     |
| <b>Format</b>             | Antigen affinity purified                                                                                                                                                 |
| <b>Clonality</b>          | Polyclonal (rabbit origin)                                                                                                                                                |
| <b>Isotype</b>            | Rabbit IgG                                                                                                                                                                |
| <b>Purity</b>             | Antigen affinity purified                                                                                                                                                 |
| <b>Buffer</b>             | Lyophilized from 1X PBS with 2% Trehalose                                                                                                                                 |
| <b>UniProt</b>            | Q9UI95                                                                                                                                                                    |
| <b>Localization</b>       | Nuclear, cytoplasmic                                                                                                                                                      |
| <b>Applications</b>       | Western Blot : 0.5-1ug/ml<br>Immunohistochemistry (FFPE) : 2-5ug/ml<br>Immunofluorescence : 5ug/ml<br>Flow Cytometry : 1-3ug/million cells<br>Direct ELISA : 0.1-0.5ug/ml |
| <b>Limitations</b>        | This MAD2B antibody is available for research use only.                                                                                                                   |



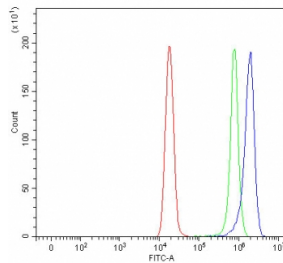
IHC staining of FFPE human liver cancer tissue with MAD2B antibody. HIER: boil tissue sections in pH8 EDTA for 20 min and allow to cool before testing.



Immunofluorescent staining of FFPE human U-2 OS cells with MAD2B antibody (green) and DAPI nuclear stain (blue). HIER: steam section in pH6 citrate buffer for 20 min.



Western blot testing of human 1) A375, 2) 293T, 3) HeLa, 4) K562, 5) Jurkat, 6) ThP-1 and 7) SH-SY5Y cell lysate with MAD2B antibody. Predicted molecular weight ~24 kDa.



Flow cytometry testing of fixed and permeabilized human HeLa cells with MAD2B antibody at 1ug/million cells (blocked with goat sera); Red=cells alone, Green=isotype control, Blue= MAD2B antibody.

## Description

Mitotic spindle assembly checkpoint protein MAD2B is a protein that in humans is encoded by the MAD2L2 gene. The protein encoded by this gene is a component of the mitotic spindle assembly checkpoint that prevents the onset of anaphase until all chromosomes are properly aligned at the metaphase plate. The encoded protein, which is similar to MAD2L1, is capable of interacting with ADAM9, ADAM15, REV1, and REV3 proteins.

## Application Notes

Optimal dilution of the MAD2B antibody should be determined by the researcher.

## Immunogen

An E.coli-derived human recombinant protein (M1-K209) was used as the immunogen for the MAD2B antibody.

## Storage

After reconstitution, the MAD2B antibody can be stored for up to one month at 4oC. For long-term, aliquot and store at -20oC. Avoid repeated freezing and thawing.

