

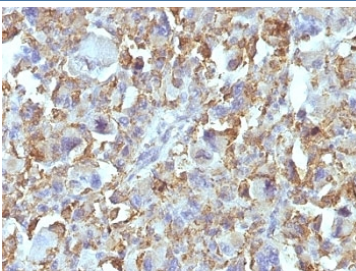
## Macrophage / Histiocytoma Marker Antibody [clone D11] (V3092)

Catalog No.	Formulation	Size
V3092-100UG	0.2 mg/ml in 1X PBS with 0.1 mg/ml BSA (US sourced) and 0.05% sodium azide	100 ug
V3092-20UG	0.2 mg/ml in 1X PBS with 0.1 mg/ml BSA (US sourced) and 0.05% sodium azide	20 ug
V3092SAF-100UG	1 mg/ml in 1X PBS; BSA free, sodium azide free	100 ug
V3092IHC-7ML	Prediluted in 1X PBS with 0.1 mg/ml BSA (US sourced) and 0.05% sodium azide; *For IHC use only*	7 ml

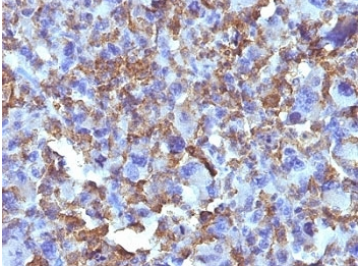
 Citations (1)

[Bulk quote request](#)

<b>Availability</b>	1-3 business days
<b>Species Reactivity</b>	Human, Rat
<b>Format</b>	Purified
<b>Host</b>	Mouse
<b>Clonality</b>	Monoclonal (mouse origin)
<b>Isotype</b>	Mouse IgG1, kappa
<b>Clone Name</b>	D11
<b>Purity</b>	Protein G affinity chromatography
<b>UniProt</b>	Not Known
<b>Localization</b>	Cell surface & cytoplasmic
<b>Applications</b>	Immunohistochemistry (FFPE) : 0.5-1ug/ml for 30 min at RT
<b>Limitations</b>	This Macrophage / Histiocytoma Marker antibody is available for research use only.



IHC: Formalin-fixed, paraffin-embedded human Histiocytoma stained with Macrophage antibody (D11).



IHC: Formalin-fixed, paraffin-embedded human Histiocytoma stained with Macrophage antibody (D11).

## Description

In Western blotting, it detects an antigen of 125kDa in human liver and 135kDa in tumors of histiocytic origin. Comparative study of this mAb and a standard CD68 mAb showed that their antigens are different. Its antigen in all macrophage types studied is located on the plasma membrane and within cytoplasmic structures including lysosomes. This mAb shows a restricted reactivity to cells of the monocyte/macrophage system. It specifically reacts with blood monocytes and stains resident macrophages in a wide variety of human tissues. This mAb does not stain antigen-presenting cells, e.g., Langerhans cells. Reportedly, its reactivity is restricted to histiocytes and macrophages.

## Application Notes

Optimal dilution of the Macrophage / Histiocytoma Marker antibody should be determined by the researcher.

1. Staining of formalin-fixed tissues requires boiling tissue sections in 10mM Citrate buffer, pH 6.0, for 10-20 min followed by cooling at RT for 20 min.
2. The prediluted format is supplied in a dropper bottle and is optimized for use in IHC. After epitope retrieval step (if required), drip mAb solution onto the tissue section and incubate at RT for 30 min.

## Immunogen

A membrane preparation from human hepatocytes was used as the immunogen for the Macrophage / Histiocytoma Marker antibody.

## Storage

Store the Macrophage / Histiocytoma Marker antibody at 2-8°C (with azide) or aliquot and store at -20°C or colder (without azide).