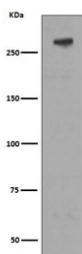


## M6PR Antibody / IGF2R [clone DIC-9] (RQ5375)

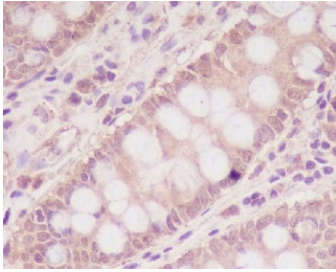
Catalog No.	Formulation	Size
RQ5375	Antibody in PBS with 0.02% sodium azide, 50% glycerol and 0.4-0.5mg/ml BSA	100 ul

[Bulk quote request](#)

Availability	1-2 weeks
Species Reactivity	Human
Format	Purified
Host	Rabbit
Clonality	Rabbit Monoclonal
Isotype	Rabbit IgG
Clone Name	DIC-9
Purity	Affinity purified
UniProt	P11717
Localization	Cytoplasmic
Applications	Western Blot : 1:1000-1:2000 Immunohistochemistry (FFPE) : 1:50-1:200
Limitations	This M6PR antibody is available for research use only.



Western blot testing of human Jurkat cell lysate with M6PR antibody. Predicted molecular weight ~274 kDa.



IHC staining of FFPE human colon with M6PR antibody. HIER: boil tissue sections in pH6, 10mM citrate buffer, for 10-20 min and allow to cool before testing.

## Description

This gene encodes a receptor for both insulin-like growth factor 2 and mannose 6-phosphate. The binding sites for each ligand are located on different segments of the protein. This receptor has various functions, including in the intracellular trafficking of lysosomal enzymes, the activation of transforming growth factor beta, and the degradation of insulin-like growth factor 2. Mutation or loss of heterozygosity of this gene has been association with risk of hepatocellular carcinoma. [RefSeq]

## Application Notes

Optimal dilution of the M6PR antibody should be determined by the researcher.

## Immunogen

A synthetic peptide specific to human M6PR / IGF2R was used as the immunogen for the M6PR antibody.

## Storage

Store the M6PR antibody at -20oC.