

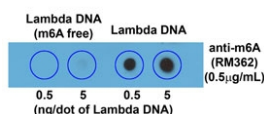
m6A Antibody / N6-Methyladenosine [clone RM362] (R20382)

Catalog No.	Formulation	Size
R20382-50UG	1 mg/ml in PBS with 50% glycerol, 1% BSA and 0.09% sodium azide	50 ug

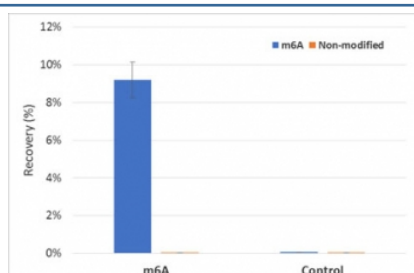
Recombinant **RABBIT MONOCLONAL**

[Bulk quote request](#)

Availability	1-3 business days
Species Reactivity	N/A
Format	Purified
Clonality	Recombinant Rabbit Monoclonal
Isotype	Rabbit IgG
Clone Name	RM362
Purity	Protein A purified from animal origin-free supernatant
Applications	Dot Blot : 0.5ug/ml-2ug/ml ELISA : 0.1ug/ml-3ug/ml MeRIP : 0.2ug/ml-5ug/ml
Limitations	This recombinant m6A antibody is available for research use only.



Dot blot of Lambda DNA with and without m6A, using recombinant m6A antibody (clone RM362). The membrane was pre-spotted with 5, and 0.5 ng/dot of lambda DNA. m6A-free DNA was isolated from bacteriophage lambda grown in an E. coli host-deficient in adenine methylase (dam⁻).



MeRIP was performed using M6A and control RNA sourced from New England Biolabs (cat # E1610). Recombinant m6A antibody (clone RM362) and PEG antibody (clone RM105) were mixed for a short time, with Protein A beads before the addition of m6A labelled and non- labelled RNA (in equal amounts). Captured RNA was then washed, eluted and run through RT-PCR. Resulting cDNA was then analyzed using Realtime PCR with specific probes to m6A labelled and un-labelled sequences.

Description

This antibody reacts to N6-Methyladenosine (m6A) in both RNA and DNA. No cross reactivity with non-methylated adenosine.

Application Notes

The stated application concentrations are suggested starting points. Titration of the recombinant m6A antibody may be required due to differences in protocols and secondary/substrate sensitivity.

Immunogen

BSA-conjugated N6-Methyladenosine was used as the immunogen for the recombinant m6A antibody.

Storage

Store the recombinant m6A antibody at -20oC.