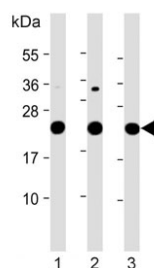


LZIC Antibody (F54711)

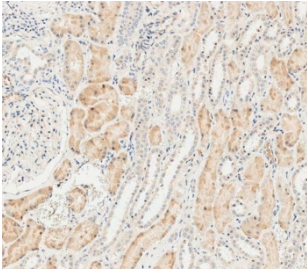
Catalog No.	Formulation	Size
F54711-0.4ML	In 1X PBS, pH 7.4, with 0.09% sodium azide	0.4 ml
F54711-0.08ML	In 1X PBS, pH 7.4, with 0.09% sodium azide	0.08 ml

[Bulk quote request](#)

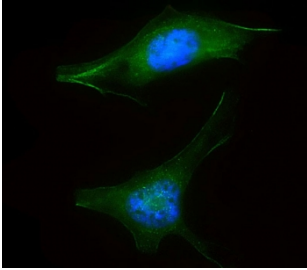
Availability	1-3 business days
Species Reactivity	Human, Rat
Format	Purified
Host	Rabbit
Clonality	Polyclonal (rabbit origin)
Isotype	Rabbit Ig
Purity	Antigen affinity purified
UniProt	Q8WZA0
Applications	Immunofluorescence : 1:25 Western Blot : 1:500-1:2000 Flow Cytometry : 1:25 (1x10e6 cells) Immunohistochemistry (FFPE) : 1:25
Limitations	This LZIC antibody is available for research use only.



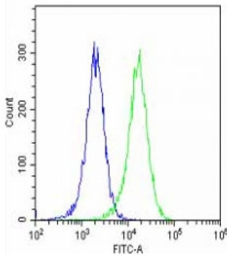
Western blot testing of 1) human HeLa, 2) human K562 and 3) rat PC-12 cell lysate with LZIC antibody. Predicted molecular weight ~21 kDa.



IHC testing of FFPE human kidney tissue with LZIC antibody. HIER: steam section in pH9 EDTA for 20 min and allow to cool prior to staining.



Immunofluorescent staining of fixed and permeabilized human HeLa cells with LZIC antibody (green) and DAPI nuclear stain (blue).



Flow cytometry testing of fixed and permeabilized human HeLa cells with LZIC antibody; Blue=isotype control, Green= LZIC antibody.

Description

LZIC belongs to the CTNNBIP1 family. It is ubiquitously expressed with highest levels in kidney. LZIC is up-regulated in several cases of gastric cancers.

Application Notes

The stated application concentrations are suggested starting points. Titration of the LZIC antibody may be required due to differences in protocols and secondary/substrate sensitivity.

Immunogen

A portion of amino acids 81-109 from the human protein was used as the immunogen for the LZIC antibody.

Storage

Aliquot the LZIC antibody and store frozen at -20oC or colder. Avoid repeated freeze-thaw cycles.