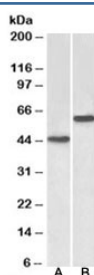


## LYVE1 Antibody / XLKD1 (R36081)

Catalog No.	Formulation	Size
R36081-100UG	0.5 mg/ml in 1X TBS, pH7.3, with 0.5% BSA (US sourced) and 0.02% sodium azide	100 ug

[Bulk quote request](#)

Availability	1-3 business days
Species Reactivity	Human
Format	Antigen affinity purified
Clonality	Polyclonal (goat origin)
Isotype	Goat Ig
Purity	Antigen affinity
Gene ID	10894
Applications	Western Blot : 2-4ug/ml ELISA (peptide) LOD : 1:32000
Limitations	This LYVE1 antibody is available for research use only.



Western blot testing of human cerebellum [A] and liver [B] lysates with LYVE1 antibody at 2ug/ml. Image shows different glycosylated forms of the predicted ~35kDa protein.

### Description

Additional name(s) for this target protein: Lymphatic vessel endothelial hyaluronan receptor 1

### Application Notes

Optimal dilution of the LYVE1 antibody should be determined by the researcher.

### Immunogen

Amino acids STETEPFVENK were used as the immunogen for this LYVE1 antibody. The amino acid sequence used as

immunogen is from the extracellular portion of the protein.

## **Storage**

Aliquot and store the LYVE1 antibody at -20oC.