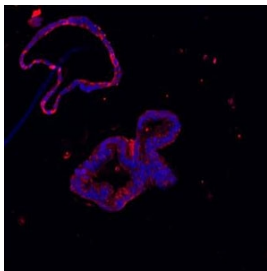


Lysozyme Antibody / LYZ (R32157)

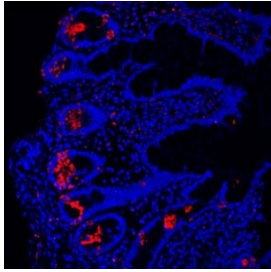
Catalog No.	Formulation	Size
R32157	0.5mg/ml if reconstituted with 0.2ml sterile DI water	100 ug

Bulk quote request

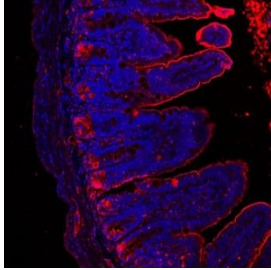
Availability	1-3 business days
Species Reactivity	Human, Mouse, Rat
Format	Antigen affinity purified
Host	Rabbit
Clonality	Polyclonal (rabbit origin)
Isotype	Rabbit IgG
Purity	Antigen affinity
Buffer	Lyophilized from 1X PBS with 2.5% BSA and 0.025% sodium azide
UniProt	P61626
Localization	Cytoplasmic
Applications	Western Blot : 0.1-0.5ug/ml Immunohistochemistry (FFPE) : 0.5-1ug/ml Immunofluorescence : 5-7ug/ml
Limitations	This Lysozyme antibody is available for research use only.



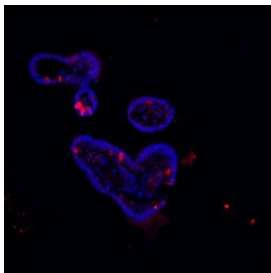
Immunofluorescent staining of FFPE human colon with Lysozyme antibody (red) and DAPI (blue). HIER: Boil the paraffin sections in pH 6, 10mM citrate buffer for 20 minutes and allow to cool prior to staining.



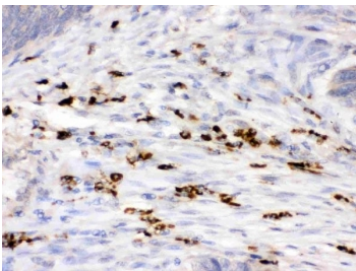
Immunofluorescent staining of FFPE human ileum with Lysozyme antibody (red) and DAPI (blue). HIER: Boil the paraffin sections in pH 6, 10mM citrate buffer for 20 minutes and allow to cool prior to staining.



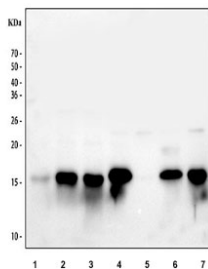
Immunofluorescent staining of FFPE mouse ileum with Lysozyme antibody (red) and DAPI (blue). HIER: Boil the paraffin sections in pH 6, 10mM citrate buffer for 20 minutes and allow to cool prior to staining.



Immunofluorescent staining of FFPE mouse ileum with Lysozyme antibody (red) and DAPI (blue). HIER: Boil the paraffin sections in pH 6, 10mM citrate buffer for 20 minutes and allow to cool prior to staining.



IHC testing of FFPE human intestinal cancer with Lysozyme antibody. HIER: Boil the paraffin sections in pH 6, 10mM citrate buffer for 20 minutes and allow to cool prior to staining.



Western blot testing of 1) human ThP1, 2) human HL60, 3) human U937, 4) rat lung, 5) rat PC-12, 6) mouse lung and 7) mouse RAW264.7 cell lysate with Lysozyme antibody. Expected molecular weight ~17 kDa.

Description

In humans, the lysozyme enzyme is encoded by the LYZ gene. This gene encodes human lysozyme c, whose natural substrate is the bacterial cell wall peptidoglycan (cleaving the beta [1-4] glycosidic linkages between N-acetylmuramic acid and N-acetylglucosamine). Lysozyme is one of the antimicrobial agents found in human milk, and is also present in spleen, lung, kidney, white blood cells, plasma, saliva, and tears. The protein has antibacterial activity against a number of bacterial species. Missense mutations in this gene have been identified in heritable renal amyloidosis.

Application Notes

Optimal dilution of the Lysozyme antibody should be determined by the researcher.

Immunogen

Amino acids NIADAVACAQRVVRDPQGIRAWVAWRNRCQNRDVRQ of human LYZ were used as the immunogen for the Lysozyme antibody.

Storage

After reconstitution, the Lysozyme antibody can be stored for up to one month at 4°C. For long-term, aliquot and store at -20°C. Avoid repeated freezing and thawing.