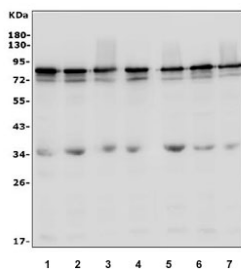


LYRIC Antibody / Metadherin / AEG-1 (R31751)

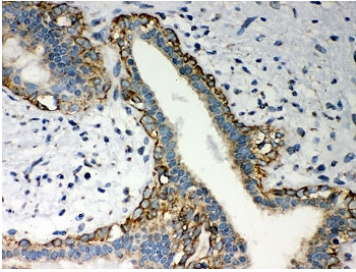
Catalog No.	Formulation	Size
R31751	0.5mg/ml if reconstituted with 0.2ml sterile DI water	100 ug

[Bulk quote request](#)

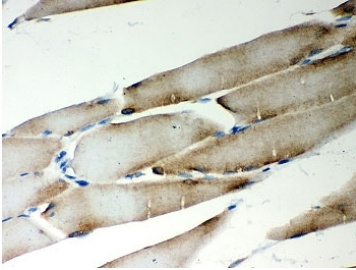
Availability	1-3 business days
Species Reactivity	Human, Mouse, Rat
Format	Antigen affinity purified
Host	Rabbit
Clonality	Polyclonal (rabbit origin)
Isotype	Rabbit IgG
Purity	Antigen affinity
Buffer	Lyophilized from 1X PBS with 2.5% BSA, 0.025% sodium azide
Gene ID	92140
Localization	Nuclear, cytoplasmic
Applications	Western Blot : 0.5-1ug/ml IHC (FFPE) : 0.5-1ug/ml ICC (FFPE) : 0.5-1ug/ml
Limitations	This LYRIC antibody is available for research use only.



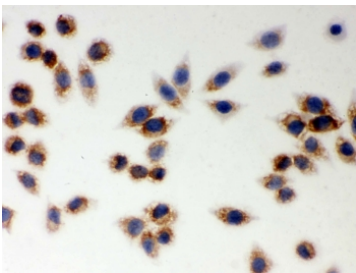
Western blot testing of human 1) U-87 MG, 2) HeLa, 3) MDA-MB-453, 4) PC-3, 5) A431, 6) Caco-2 and 7) HepG2 cell lysate with LYRIC antibody. Expected molecular weight: 70-80 kDa.



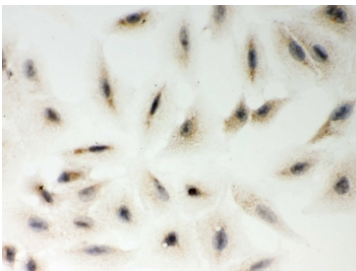
IHC-P: LYRIC antibody testing of human breast cancer tissue. HIER: steam section in pH6 citrate buffer for 20 min and allow to cool prior to testing.



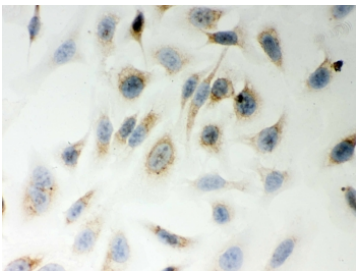
IHC-P: LYRIC antibody testing of rat skeletal muscle tissue. HIER: steam section in pH6 citrate buffer for 20 min and allow to cool prior to testing.



ICC testing of FFPE human SMMC-7721 cells with LYRIC antibody. HIER: steam section in pH6 citrate buffer for 20 min and allow to cool prior to testing.



ICC testing of FFPE human A549 cells with LYRIC antibody. HIER: steam section in pH6 citrate buffer for 20 min and allow to cool prior to testing.



ICC testing of FFPE human HeLa cells with LYRIC antibody. HIER: steam section in pH6 citrate buffer for 20 min and allow to cool prior to testing.

Description

MTDH (Metadherin), also known as LYRIC or astrocyte elevated gene-1 protein (AEG-1), is a protein that in humans is encoded by the MTDH gene. It is involved in HIF-1 alpha mediated angiogenesis, interacts with SND1 and is involved in RNA-induced silencing complex (RISC), and plays a very important role in RISC and miRNA functions. LYRIC induces an oncogene called Late SV40 factor (LSF/TFCP2) which is involved in thymidylate synthase (TS) induction and DNA biosynthesis synthesis. Late SV40 factor enhances angiogenesis by transcriptionally up-regulating matrix metalloproteinase-9 (MMP9). LYRIC acts as an oncogene in melanoma, malignant glioma, breast cancer and hepatocellular carcinoma. It is highly expressed in these cancers and helps in progression and development of these cancers. It is induced by c-Myc oncogene and plays very important role in anchorage independent growth of cancer cells.

Application Notes

The stated application concentrations are suggested starting amounts. Titration of the LYRIC antibody may be required due to differences in protocols and secondary/substrate sensitivity.

Immunogen

Human partial recombinant protein (AA 101-270) was used as the immunogen for this LYRIC antibody.

Storage

After reconstitution, the LYRIC antibody can be stored for up to one month at 4°C. For long-term, aliquot and store at -20°C. Avoid repeated freezing and thawing.