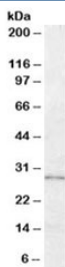


LYPLAL1 Antibody (R33608)

Catalog No.	Formulation	Size
R33608-100UG	0.5 mg/ml in 1X TBS, pH7.3, with 0.5% BSA (US sourced) and 0.02% sodium azide	100 ug

[Bulk quote request](#)

Availability	1-3 business days
Species Reactivity	Human
Format	Antigen affinity purified
Clonality	Polyclonal (goat origin)
Isotype	Goat Ig
Purity	Antigen affinity
Gene ID	127018
Applications	Western Blot : 0.3-1ug/ml ELISA (peptide) LOD : 1:16000
Limitations	This LYPLAL1 antibody is available for research use only.



Western blot testing of human adipose lysate with LYPLAL1 antibody at 0.3ug/ml.
Predicted molecular weight: ~26kDa.

Description

Additional name(s) for this target protein: Lysophospholipase-like 1

Application Notes

Optimal dilution of the LYPLAL1 antibody should be determined by the researcher.

Immunogen

Amino acids DRFKITNDCPEHLE were used as the immunogen for this LYPLAL1 antibody.

Storage

Aliquot and store the LYPLAL1 antibody at -20oC.