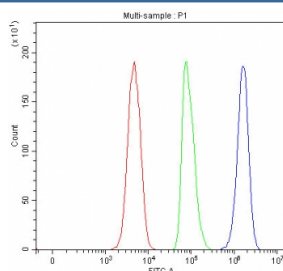


LYPD6 Antibody / Ly6/PLAUR domain-containing protein 6 (RQ8566)

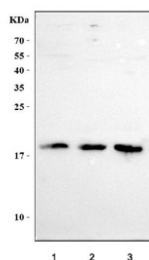
Catalog No.	Formulation	Size
RQ8566	0.5mg/ml if reconstituted with 0.2ml sterile DI water	100 ug

Bulk quote request

Availability	1-3 days
Species Reactivity	Human
Format	Antigen affinity purified
Clonality	Polyclonal (rabbit origin)
Isotype	Rabbit IgG
Purity	Antigen affinity purified
Buffer	Lyophilized from 1X PBS with 2% Trehalose
UniProt	Q86Y78
Applications	Western Blot : 0.5-1ug/ml Flow Cytometry : 1-3ug/million cells ELISA : 0.1-0.5ug/ml
Limitations	This LYPD6 antibody is available for research use only.



Flow cytometry testing of fixed and permeabilized human SH-SY5Y cells with LYPD6 antibody at 1ug/million cells (blocked with goat sera); Red=cells alone, Green=isotype control, Blue= LYPD6 antibody.



Western blot testing of human 1) RT4, 2) MCF7 and 3) SiHa cell lysate with LYPD6 antibody. Predicted molecular weight ~19 kDa.

Description

Members of the LY6 protein family such as LYPD6 have at least one 80-amino acid LU domain that contains 10 conserved cysteines with a defined disulfide-bonding pattern (Zhang et al., 2010 [PubMed 19653121]).

Application Notes

Optimal dilution of the LYPD6 antibody should be determined by the researcher.

Immunogen

An E.coli-derived human recombinant protein (amino acids A23-C155) was used as the immunogen for the LYPD6 antibody.

Storage

After reconstitution, the LYPD6 antibody can be stored for up to one month at 4°C. For long-term, aliquot and store at -20°C. Avoid repeated freezing and thawing.