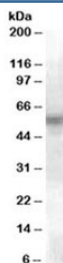


## LYN Antibody (R34674)

Catalog No.	Formulation	Size
R34674-100UG	0.5 mg/ml in 1X TBS, pH7.3, with 0.5% BSA (US sourced) and 0.02% sodium azide	100 ug

[Bulk quote request](#)

Availability	1-3 business days
Species Reactivity	Human
Predicted Reactivity	Cow
Format	Antigen affinity purified
Host	Goat
Clonality	Polyclonal (goat origin)
Isotype	Goat Ig
Purity	Antigen affinity
Gene ID	4067
Localization	Cytoplasmic, nuclear, cell membrane
Applications	Western Blot : 0.1-0.3ug/ml ELISA (peptide) LOD : 1:16000
Limitations	This LYN antibody is available for research use only.



Western blot testing of U937 lysate with LYN antibody at 0.1ug/ml. Predicted molecular weight ~58 kDa (isoform 1).

## Description

Additional name(s) for this target protein: V-yes-1 Yamaguchi sarcoma viral related oncogene; LYN

## Application Notes

Optimal dilution of the LYN antibody should be determined by the researcher.

## **Immunogen**

Amino acids KTQPVRNTERT were used as the immunogen for this LYN antibody.

## **Storage**

Aliquot and store the LYN antibody at -20oC.