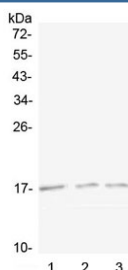


Lymphotactin Antibody / XCL1 (RQ4428)

Catalog No.	Formulation	Size
RQ4428	0.5mg/ml if reconstituted with 0.2ml sterile DI water	100 ug

Bulk quote request

Availability	1-3 business days
Species Reactivity	Mouse, Rat
Format	Antigen affinity purified
Clonality	Polyclonal (rabbit origin)
Isotype	Rabbit IgG
Purity	Antigen affinity purified
Buffer	Lyophilized from 1X PBS with 2% Trehalose and 0.025% sodium azide
UniProt	P47993
Applications	Western Blot : 0.5-1ug/ml Direct ELISA : 0.1-0.5ug/ml (recombinant mouse protein) (BSA-free format available)
Limitations	This Lymphotactin antibody is available for research use only.



Western blot testing of 1) mouse spleen, 2) mouse kidney and 3) rat kidney lysate with Lymphotactin antibody at 0.5ug/ml. Predicted molecular weight ~13 kDa, can be observed at 15-20 kDa.

Description

Chemokine (C motif) ligand (XCL1) is a small cytokine belonging to the XC chemokine family that is also known as lymphotactin. Muller et al. (1995) mapped the gene to chromosome 1q23 by FISH. The sequence of the deduced 114-amino acid protein is most homologous to the CC chemokines CCL8 and CCL3. It is found in high levels in spleen, thymus, intestine and peripheral blood leukocytes, and at lower levels in lung, prostate gland and ovary. XCL1 induces the migration of cells expressing XCR1.

Application Notes

Optimal dilution of the Lymphotactin antibody should be determined by the researcher.

Immunogen

A mouse partial recombinant protein corresponding to amino acids V22-G114 was used as the immunogen for the Lymphotactin antibody.

Storage

After reconstitution, the Lymphotactin antibody can be stored for up to one month at 4oC. For long-term, aliquot and store at -20oC. Avoid repeated freezing and thawing.