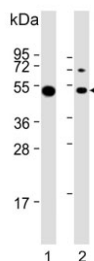


## Lymphocyte Specific Protein 1 Antibody / LSP1 (F54824)

Catalog No.	Formulation	Size
F54824-0.4ML	In 1X PBS, pH 7.4, with 0.09% sodium azide	0.4 ml
F54824-0.08ML	In 1X PBS, pH 7.4, with 0.09% sodium azide	0.08 ml

[Bulk quote request](#)

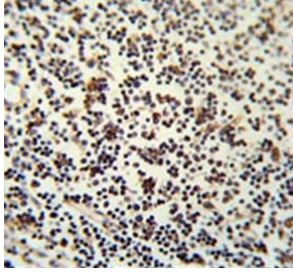
<b>Availability</b>	1-3 business days
<b>Species Reactivity</b>	Human
<b>Format</b>	Purified
<b>Clonality</b>	Polyclonal (rabbit origin)
<b>Isotype</b>	Rabbit Ig
<b>Purity</b>	Antigen affinity purified
<b>UniProt</b>	P33241
<b>Localization</b>	Cytoplasmic, membrane
<b>Applications</b>	Flow Cytometry : 1:10-1:50 (1x10e6 cells) Immunohistochemistry (FFPE) : 1:50-1:100 Western Blot : 1:2000-1:8000
<b>Limitations</b>	This Lymphocyte Specific Protein 1 antibody is available for research use only.



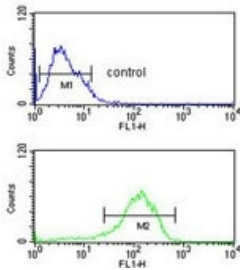
Western blot testing of human 1) Daudi and 2) Ramos cell lysate with Lymphocyte Specific Protein 1 antibody. Predicted molecular weight: ~37 kDa but is routinely observed at ~52 kDa (PMID: 15684321).



Western blot testing of human MCF7 cell lysate with Lymphocyte Specific Protein 1 antibody. Predicted molecular weight: ~37 kDa but is routinely observed at ~52 kDa (PMID: 15684321).



IHC testing of FFPE human lymph node tissue with Lymphocyte Specific Protein 1 antibody. HIER: steam section in pH6 citrate buffer for 20 min and allow to cool prior to staining.



Flow cytometry testing of human MCF7 cells with Lymphocyte Specific Protein 1 antibody; Blue=isotype control, Green= Lymphocyte Specific Protein 1 antibody.

## Description

LSP1 / Lymphocyte Specific Protein 1 is an intracellular F-actin binding protein. The protein is expressed in lymphocytes, neutrophils, macrophages, and endothelium and may regulate neutrophil motility, adhesion to fibrinogen matrix proteins, and transendothelial migration. Alternative splicing results in multiple transcript variants encoding different isoforms.

## Application Notes

The stated application concentrations are suggested starting points. Titration of the Lymphocyte Specific Protein 1 antibody may be required due to differences in protocols and secondary/substrate sensitivity.

## Immunogen

A portion of amino acids 108-134 from the human protein was used as the immunogen for the Lymphocyte Specific Protein 1 antibody.

## Storage

Aliquot the Lymphocyte Specific Protein 1 antibody and store frozen at -20oC or colder. Avoid repeated freeze-thaw cycles.